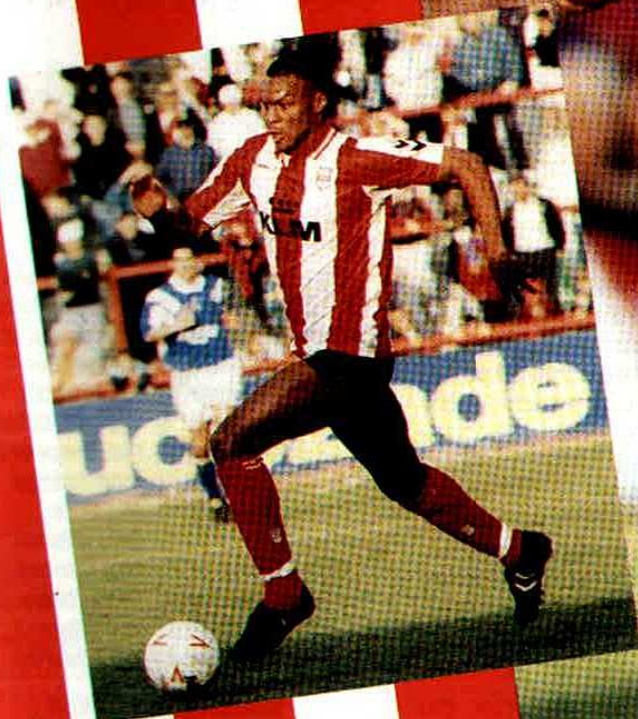


Griffin

GAZETTE

1991-92
3rd DIVISION
CHAMPIONS



BARCLAYS LEAGUE DIVISION ONE
BRENTFORD V. SWINDON TOWN
Saturday, 27th March, 1993. Kick-off 3.00p.m.

TODAY'S
MATCH
SPONSOR
KESAK LTD.

OFFICIAL MATCHDAY
MAGAZINE

£1.50



Brentford Football Club PLC

Griffin Park, Braemar Road
Brentford, Middlesex TW8 0NT
Telephone: 081-847 2511
Facsimile: 081-568 9940

President

W. Wheatley

Deputy President

Eric White

Directors

G. V. Potter (Chairman)

E. J. Radley-Smith, MS,

FRCS, LRCP

(Vice Chairman:

Hon. Con. Surgeon)

R. J. J. Blindell, LLB

J. P. Herting

M. M. Lange

D. Tana

Chief Executive

Keith Loring

Club Secretary

Polly Kates

Manager

Phil Holder

Assistant Manager

Wilf Rostron

Coach

Graham Pearce

Football in the Community

Martyn Spong

Medical Officer

Dr. F. Dignan

A.K.C., M.R.C.P. (UK), M.R.C.G.P.

Physiotherapist

Roy Clare

Youth Development Officer

Joe Gadston

Safety Officer

Jill Dawson

Office Manager

Joyce Neate

Club Shop Manager

Lesley Loring

Club Shop Consultant

Ron Marsh

Supporters' Association

Chairman

Peter Gilham

FRONT COVER CAPTION

Main Pic: Recent signing
PAUL STEPHENSON in pensive mood.

Inset: GAYLE 'warning'.

MARCUS is back in action.

Pics by LEE DOYLE

AROUND THE

First let me welcome today's sponsors Kesak Limited, we trust they and their guests have a very happy afternoon.

Secondly, although I am not sure that's the right word a special greeting to former Labour Leader Neil Kinnock who is the celebrity covering the game on behalf of the Sunday Express. Neil has not yet ever seen us win on his numerous visits to Griffin Park and if we do not break that duck today, we can assure him he will not be welcome for the rest of the season.



BITS AND PIECES

Our Capital League game away to Wokingham Town will now take place at Finchampstead Road, Wokingham on Thursday, 22nd April, kick-off 7.30p.m. In response to enquiries, the Notts County First Division game here on Easter Monday kicks off at 3.00p.m.

Lodgings will be required for younger members of the staff for next season and anybody interested in providing accommodation should contact Polly Kates.

With reference to my paragraph in last week's Griffin Gazette on parrots, someone has reminded me that we have a Polly on the staff, namely Secretary Polly Kates.

I recently received a copy of Programme Monthly which is the leading journal for football programme collectors. You may remember that its editor John Litster did a series of articles for us last season and Programme Monthly is available from 14 Raith Crescent, Kirkcaldy, Fife KY2 5NN. Price £1.30 plus 30p postage.

FAMINE ENDS

Our goal famine ended after 810 minutes with Gary Blissett's 70th minute winner at Grimsby. It also meant that we at last got off the 37 point mark following 7 consecutive defeats. Gary's goal was his 100th for us only the fourth player to achieve this landmark. Everyone was pleased to see Terry Evans back in such good form and also Bob Booker

in his brief substitute appearance. Well done, the lads. Also to the 142 supporters who made the long trek to Grimsby on a very cold night.

GERRY'S BACK

Welcome back to Gerry Peyton who has signed for us to the end of the season. Gerry was in impressive form when he made 17 appearances for us on loan from Everton earlier this season.

On the other side of the coin Shane Westley has requested a transfer and this has been granted.

CLUB SHOP SALE NOW ON

UNUSUAL TEAM

I blame the Manager myself for not letting the Press Officer know he was playing Brian Statham in goal at Grimsby and that we had re-signed Keith Jones!!

Here's how the Grimsby programme listed our team. If Phil Holder had taken a supporter's recent advice that he puts players' numbers according to position then he would have had to change all eleven. Maybe Bliss wearing 9 was lucky!

| Grimsby Town | Brentford |
|----------------|-------------------|
| Rhys Wilmot | 1 Brian Statham |
| John McDermott | 2 Micky Bennett |
| Gary Croft | 3 Keith Millen |
| Paul Fletcher | 4 Jamie Bates |
| Mark Lever | 5 Simon Ratcliffe |
| Kevin Jobling | 6 Paul Stephenson |
| Tony Ford | 7 Alan Dickens |
| Dave Gilbert | 8 Joe Allon |
| Paul Groves | 9 Gary Blissett |
| Clive Mendonca | 10 Billy Manuel |
| Tony Rees | 11 Keith Jones |
| To Be Named | 12 To Be Named |
| To Be Named | 14 To Be Named |

STATISTICAL CORNER

Appearances: Blissett 50, Statham 49, Millen 46, Bennett 39+2, Manuel 37+3, Bates 35, Gayle 30+12, Hughton 29, Ratcliffe 28+4, Luscombe 27+10, Benstead 28, Allon 23+3, Smillie 22+3, Peyton 17, Chalmers 15+2, Westley 15+1, Godfrey 14+16, Mortimer 8, Jones 7+12, Kruszyński 7+1, Bayes 5, Stephenson 5, Buckle 4+3, Dickens

E HIVE

by Eric White



4+2, Booker 3+3, Evans 2, Rostron 1+2, Peters 0+1.

Scorers: Blissett 24, Allon 10, Gayle 4, Luscombe 4, Millen 4, Bennett 3, Ratcliffe 3, Bates 2, Godfrey 2, Booker 1, Chalmers 1, Manuel 1, Smillie 1, Westley 1, O.G. 3.

Star Men: Millen 7, Manuel 6, Bennett 5, Statham 5, Allon 3, Bates 3, Benstead 2, Blissett 2, Chalmers 2, Gayle 2, Kruszynski 2, Luscombe 2, Ratcliffe 2, Dickens 1, Godfrey 1, Jones 1, Mortimer 1, Peyton 1, Smillie 1.

TICKET LINE 0898 12 10 17

STANDARD FIVE-A-SIDES

Just a reminder that the London Evening Standard hold a Five-A-Side Competition at Wembley Arena on Tuesday, 11th May 1993, kick-off 6.30p.m. The First Round Draw is as follows:

Watford v Millwall
West Ham v Brentford
Chelsea v Leyton Orient
Tottenham Hotspur v
Charlton Athletic
Crystal Palace v Wimbledon
Barnet v Fulham
Queens Park Rangers v
Luton Town

SOUTH EAST COUNTIES LEAGUE TABLE (Up to and including 20th March 1993)

| | P | W | D | L | F | A | Pts | Goal Diff |
|------------------------|----|----|---|----|----|----|-----|-----------|
| Wimbledon | 26 | 19 | 3 | 4 | 67 | 26 | 41 | +41 |
| BRENTFORD | 25 | 12 | 8 | 5 | 39 | 25 | 32 | +14 |
| Bristol City | 23 | 14 | 2 | 7 | 45 | 28 | 30 | +17 |
| Luton Town | 23 | 13 | 0 | 10 | 48 | 40 | 26 | +8 |
| Southampton | 24 | 8 | 9 | 7 | 26 | 26 | 25 | - |
| Brighton & Hove Albion | 22 | 10 | 4 | 8 | 38 | 36 | 24 | +2 |
| AFC Bournemouth | 22 | 9 | 6 | 7 | 34 | 32 | 24 | +2 |
| Tottenham Hotspur | 24 | 10 | 4 | 10 | 43 | 47 | 24 | -4 |
| Crystal Palace | 25 | 10 | 3 | 12 | 37 | 32 | 23 | +5 |
| Reading | 25 | 6 | 6 | 13 | 35 | 51 | 18 | -16 |
| Oxford United | 23 | 6 | 4 | 13 | 40 | 49 | 16 | -9 |
| Swindon Town | 22 | 6 | 4 | 12 | 25 | 42 | 16 | -17 |
| Bristol Rovers | 23 | 5 | 5 | 13 | 31 | 53 | 15 | -22 |
| Colchester United | 21 | 7 | 0 | 14 | 19 | 40 | 14 | -21 |

Ticket prices are:

Area A - £20, **Area B** - £17.50, **Area C** - £15, **Area D** - £12 and can be obtained as follows:

BY TELEPHONE: Wembley Box Office (081-900 1234) is open 9.00a.m. to 9.00p.m. Monday to Saturday, 9.00a.m. to 8.00p.m. on Sunday. There is a service charge of £1 per ticket.

BY POST: For postal applications, cheques should be made payable to "Wembley Stadium Limited" and sent to "Evening Standard 5-A-Sides", Wembley Arena, London HA9 0DW.

IN PERSON: Tickets can be purchased in person from Wembley Arena Box Office and participating Clubs' Ticket Offices. Also available at The Virgin Megastore, Oxford Street, London W1. OR FROM OUR OFFICES DURING NORMAL WORKING HOURS.



STOP PRESS

Just as we go to press on transfer deadline day we are delighted to say that Kenny Samson has joined us from Everton.

DIARY DATA

An Evening with
JIM BOWEN
in the Bees Inn
Monday, 29th March, 1993
Tickets are still available
Price £15.00

We are often asked by our "regulars" for event information as early as possible. Here are details of our

Cup Final Weekend Double

OUR GOLF DAY

The Royal Mid Surrey - Richmond

FRIDAY, 14th MAY, 1993

Sponsored by KLM Royal Dutch Airlines
We have decided to have a change of format from the Pro/Am event. This year we are pleased to present our first

"CELEBRITY/AM"

Celebrities are available but not obligatory
- teams of 4 amateurs permissible
£400 + VAT for team of 4 including
Breakfast/Lunch and Dinner.
Competition 18 hole Stableford for a team of 4 - best 2 scores to count.
(Additional 9 hole competition for early starters)

OUR SEVENTEENTH SPORTSMAN'S DINNER

Heathrow Penta Hotel

MONDAY, 17th MAY, 1993

Sponsored by KLM Royal Dutch Airlines
Sir Richard Hadlee has agreed to be our speaker with comedian Mick Miller completing a special line up. Many old favourites and a few new ones will ensure our successful series of Sportsman's Dinners continue.
£480 + VAT for a Table of 12 - smaller and larger tables available

Book by 31st March for BOTH Functions and your name will be entered in a free draw for a pair of Coca-Cola Cup Final tickets. Winners will be notified on 2nd April.

To book early ring Natalie or Winnie on
081 847 2511 or fax 081 568 9940

USEFUL NUMBERS

Centenary Club Chairman
Frank Miller - 081-997 2940

Executive Club Chairman
Phil Coffey - 0344 772633

Gilhams For Away Travel
081-941 0425

Bees Inn
Sylvia Mannigan - 081-568 6271

Club Shop Mail Order
081-560 9836

Designed and Printed by
Archway - Panbourn
A member of the Wace Group
145 Sterte Road, Poole, Dorset
BH15 2AF
Telephone: (0202) 681466
Fax: (0202) 670010

"KLM's worldwide
network..."

"...ideal for
Globetrotters."



Timing and teamwork. Two essentials to world travel that KLM knows all about.

You'll find that, by careful planning with our regional partners, we offer regular travellers so much more.

More convenient schedules, easy connections from your

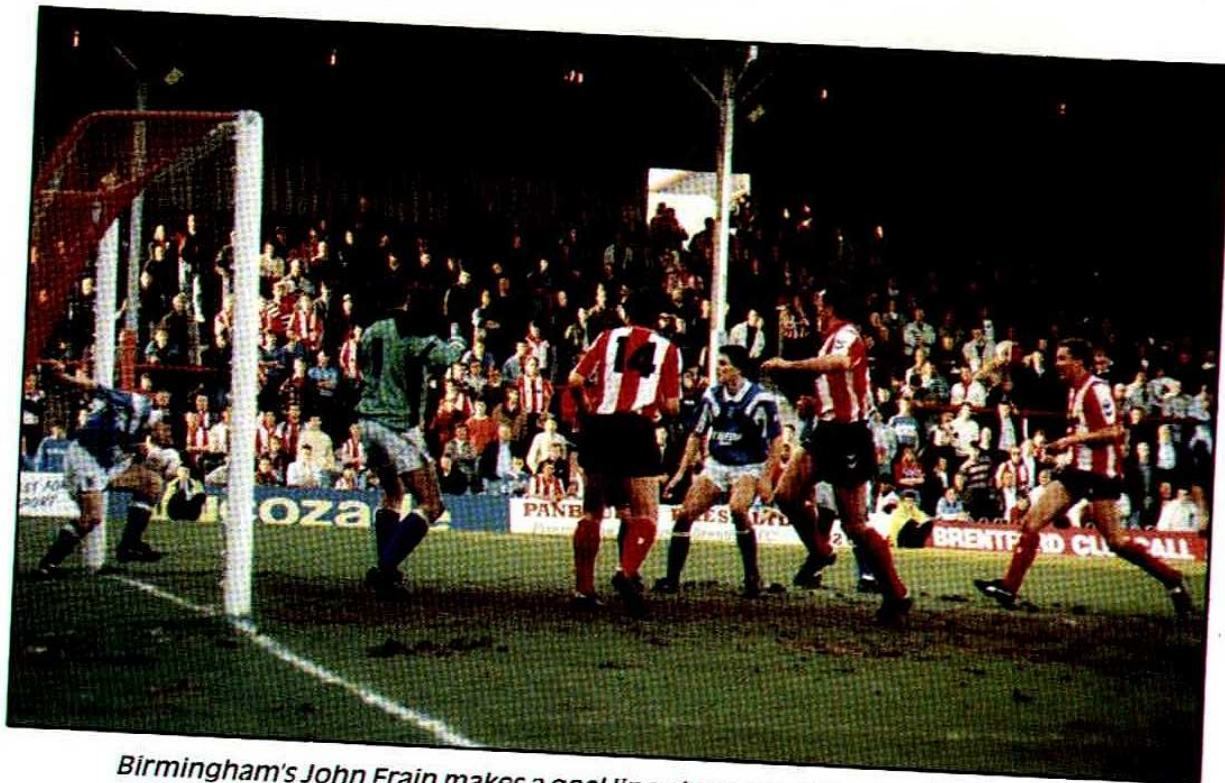
local airport. And a simple transfer at Schiphol, Amsterdam.

The net result? A quick leap from 23 airports around the UK and Ireland to over 150 cities across the world.

KLM. Made for globetrotters.

The Reliable Airline



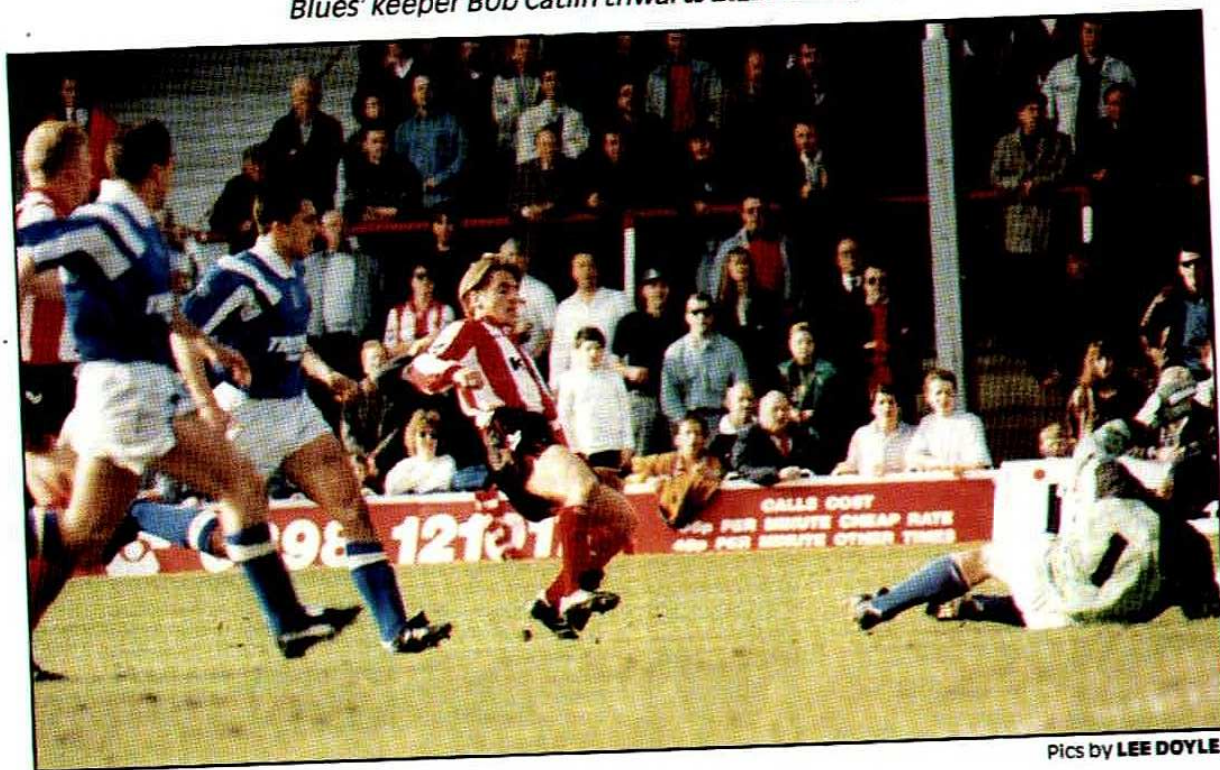


Birmingham's John Frain makes a goal line clearance from **KEITH MILLEN**.

HOT SHOT



Blues' keeper Bob Catlin thwarts **BILLY MANUEL**.



Pics by **LEE DOYLE**.

KIT SPONSORS



JAMIE BATES

- ▲ Andrew Martin
- △ Willow Tyres Ltd.
- Chrisallz Joe and Layla
- Eurolang Translations
- James Kylio
- ★ Willow Tyres Ltd.
- ☆ R. J. Toms



ASHLEY BAYES

- ▲ K.L.M. Royal Dutch Airlines
- △ K.L.M. Royal Dutch Airlines
- K.L.M. Royal Dutch Airlines
- K.L.M. Royal Dutch Airlines
- K.L.M. Royal Dutch Airlines
- ★ K.L.M. Royal Dutch Airlines
- ☆ K.L.M. Royal Dutch Airlines



MICKY BENNETT

- ▲ K.L.M. Royal Dutch Airlines
- △ K.L.M. Royal Dutch Airlines
- K.L.M. Royal Dutch Airlines
- K.L.M. Royal Dutch Airlines
- K.L.M. Royal Dutch Airlines
- ★ K.L.M. Royal Dutch Airlines
- ☆ K.L.M. Royal Dutch Airlines



GRAHAM BENSTEAD

- ▲ In memory of Emma Abigail
- △ Barry Bissett
- Rachel Carter
- Ian Hale
- London Graphic Centre
- ★ London Graphic Centre
- ☆ London Graphic Centre



GARY BLISSETT

- ▲ Steve Richardson
- △ Steve Richardson
- Steve Richardson
- Steve Richardson
- Steve Richardson
- ★ Steve Richardson
- ☆ Steve Richardson



BOB BOOKER

- ▲ Andrew Martin
- △ Joe, Caz & George
- Lisa
- Mary



PAUL BUCKLE

- ▲ Welwyn P.C. Services
- △ Welwyn P.C. Services
- Su Green
- Laura Quick
- Sally Nolan
- ★
- ☆



GRANT CHALMERS

- ▲ Roy Brehaut
- △ Roy Brehaut
- Roy Brehaut
- Roy Brehaut
- Roy Brehaut
- ★ Roy Brehaut
- ☆ Roy Brehaut



TERRY EVANS

- ▲ Derek Hazel
- △ Paul Merritt
- James & Chris Armstrong
- Keith Punnett
- Stephen Armstrong
- ★
- ☆ Bill Neate



MARCUS GAYLE

- ▲ Programme Collectors Club
- △ Programme Collectors Club
- Programme Collectors Club
- Jim Conway & Paul Salvage
- Neville Rogers
- ★ A.K. Arya - Geneva, Switzerland
- ☆ Andy White



KEVIN GODFREY

- ▲ Bill Cooper
- △ Paul and Lynn
- Jackie Shorey
- Tony Waters
- Tony Waters
- ★ Peter Quirke
- ☆ R. J. Toms



PHIL HOLDER

- ▲ Tile Superstore 081-847 0441
- △ Tile Superstore 081-847 0441
- Tile Superstore 081-847 0441
- Tile Superstore 081-847 0441
- Tile Superstore 081-847 0441
- ★ Tile Superstore 081-847 0441
- ☆ Tile Superstore 081-847 0441



CHRIS HUGHTON

- ▲ Colin Finn
- △ Colin Finn
- Colin Finn
- A. K. Arya - Geneva, Switzerland
- Morgan Rogers
- ★ Sue
- ☆ Winnie



MURRAY JONES

- ▲ Andrew Martin
- △ Keith Harbour - Germany
- Keith Harbour - Germany
- John Hirdle
-
- ★
- ☆ Natalie



DETZI KRUSZYNSKI

- ▲ BBN Industrial Fasteners
- △ BBN Industrial Fasteners
- BBN Industrial Fasteners
- BBN Industrial Fasteners
- BBN Industrial Fasteners
- ★ BBN Industrial Fasteners
- ☆ BBN Industrial Fasteners



LEE LUSCOMBE

- ▲ K.L.M. Royal Dutch Airlines
- △ K.L.M. Royal Dutch Airlines
- K.L.M. Royal Dutch Airlines
- K.L.M. Royal Dutch Airlines
- K.L.M. Royal Dutch Airlines
- ★ K.L.M. Royal Dutch Airlines
- ☆ K.L.M. Royal Dutch Airlines



BILLY MANUEL

- ▲ Jim Walsh
- △ Jim Walsh
- Jim Walsh
-
- Sally Nolan
- ★ Jim Walsh
- ☆



KEITH MILLEN

- ▲ Hobden and Morgan
- △ Samantha Gibb
- Mark Croxford
- Mark Croxford
- Samantha Gibb
- ★ M.G. Press Ltd.
- ☆ M.G. Press Ltd.



ROBERT PETERS

- ▲ Hobden and Morgan
- △
-
- Caroline Susannah Williams
-
- ★
- ☆ Joyce



SIMON RATCLIFFE

- ▲ Andrew Martin
- △ Barry Bissett
- Len Bunning
- Malcolm and Colin Capon
- Len Bunning
- ★ English Family
- ☆ Len Bunning



WILF ROSTROM

- ▲ Louisa Innes
- △ Catherine and Jonathan
-
-
-
- ★
- ☆ Beryl



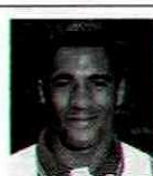
NEIL MILLIE

- ▲ Adrienne Gilham
- △ Australian Supporters
- 41 Begovich Crescent
- Abbotsbury 2176
- Australia
- ★ Helen Burkin
- ☆ Ian Burkin



CHRIS SPARKS

- ▲ Bricklayers Arms
- △ Bricklayers Arms
- Bricklayers Arms
- Bricklayers Arms
- Bricklayers Arms
- ★
- ☆



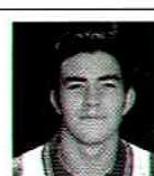
BRIAN STATHAM

- ▲ K.L.M. Royal Dutch Airlines
- △ K.L.M. Royal Dutch Airlines
- K.L.M. Royal Dutch Airlines
- K.L.M. Royal Dutch Airlines
- K.L.M. Royal Dutch Airlines
- ★ K.L.M. Royal Dutch Airlines
- ☆ K.L.M. Royal Dutch Airlines



JOE ALLON

- ▲ John Herting
- △ John Herting
- John Herting
- John Herting
- John Herting
- ★ John Herting
- ☆ John Herting



DANNY TRIPP

- ▲ Brentford Supporters Assoc.
- △ Brentford Supporters Assoc.
- Brentford Supporters Assoc.
- Brentford Supporters Assoc.
- Brentford Supporters Assoc.
- ★ Brentford Supporters Assoc.
- ☆ Brentford Supporters Assoc.



SHANE WESTLEY

- ▲ Paul Herting
- △ Paul Herting
- Paul Herting
- Paul Herting
- Paul Herting
- ★ Paul Herting
- ☆ Paul Herting

KEY:

- ▲ Shirt
- Boots
- △ Shorts

Kit Bag

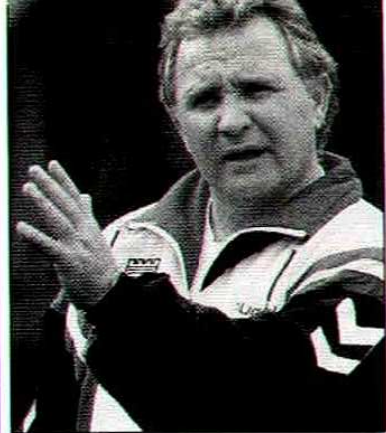
- Socks
- ★ Training Strip
- ☆ Tracksuit

TOUCHLINE TALK

I told the Press after another disappointing result against Birmingham that what we need now for the remaining ten games is bottle. We want the sort of bottle that we showed at the tail end of last season when against all the odds we won six games in a row.

What I said in the Birmingham Griffin Gazette I could almost repeat here as once again we created a number of good chances but failed to put them away. In three home games we have won 39 corners and not scored a goal, a completely unbelievable statistic. Not all of this I think you will agree has been due to bad finishing and at the moment the ball just seems destined not to go into the net. We must all be confident that this is to change and change quickly but at least there are still ten games (this was written before the Grimsby match) to go and with so many points at stake, there are opportunities to climb away from the bottom. I certainly couldn't fault the players' efforts against Birmingham or indeed in recent games and something will come along soon to change the complexion. Many people felt that had we scored early on against Birmingham, we might well have got two or three and I understand that Terry Cooper went out of his way after the game

PHIL HOLDER



to say that he thought Gary Blissett was unfortunate with his early chance as the ball bobbled when he felt sure that Bliss was going to score.

Looking ahead to our future programme, there are no easy pickings as practically every club we are due to meet are either going for the possibility of automatic promotion like West Ham, or else elevation to the Premier League via the Play-Offs into which category Swindon Town come today, or are still in danger of relegation. We have already had two good victories against them at the County Ground this season and it is up to us to make it a hat-trick. The transfer deadline has now come and gone and I am hopeful that we may have acquired at least one new player before Thursday's final curtain. Everyone will be out there doing their very best and once again I am grateful for the encouragement and support I am getting not only from the Chairman and the Board, but from the vast majority of supporters.



PRATT ELECTRICALS
Electrical Contractor



POST HOUSE, HERSHAM GREEN, HERSHAM, SURREY KT12 4HW

- ★ Office & Factory Installations ★ Computer Wiring ★ Fire Alarms ★
- ★ Boiler Controls ★ UPS ★ Trace Heating ★ Energy Conservationists ★
- ★ Emergency Lighting ★ Test & Reports

☎ 0932 225823



BOLLINGMORES

CROSS DEEP TWICKENHAM 081-891 6217

CAR OF THE MATCH



1992/J CITROËN ZX AURA 1.6i, ice blue, electric windows, sunroof and central locking, power steering, 8,800 miles..... £8995

CITROËN

| | |
|---|-------|
| 1990/H AX14 TZS, 5 door, white, 25,000 miles, sunroof, electric pack | £4995 |
| 1992/J AX Debut, 3 door, white, 6,000 miles | £4995 |
| 1990/H AX GT, 3 door, red, 34,000 miles | £5295 |
| 1990/H AX GT, 5 door, red, 20,000 miles, alloys, sunroof, electric pack | £5295 |
| 1989/G BX 16RS, silver, 28,000 miles, PAS, CDL, electric windows | £4795 |
| 1989/G BX 19TRS, white, 36,000 miles, electric sunroof and front windows | £5295 |
| 1989/G BX 19GTi, white, 50,000 miles, electric sunroof and windows, ABS | £4495 |
| 1989/F BX 19GTi Auto, grey, 50,000 miles, ABS, electric sunroof and windows | £4995 |
| 1992/K BX 19TXD, silver, 2,000 miles | £8995 |
| 1992/K BX 19TXD Turbo, triton green, 8,500 miles | £9995 |

| | |
|--|---------|
| 1991/H BX 19TGD Estate, 42,500 miles, triton green | £7995 |
| 1991/H BX 19TZi Estate, 11,000 miles, grey | £7995 |
| 1988/F CX 25Ri Familiare, 8 seater, blue, 53,000 miles | £6995 |
| 1992/J XM 2.0i, white, 5,500 miles | £10,995 |
| 1990/G XM 2.0i, onyx green, 30,000 miles | £6995 |
| 1992/K ZX 1.4 Aura, black, 4,000 miles | £8995 |
| 1992/J 1.4 Reflex, 5 door, red | £7595 |
| 1992/J ZX 1.6i Aura, ice blue, 9,000 miles | £9295 |
| 1992/K ZX 1.8i Furio Mercury, 6,000 miles | £9995 |
| 1993/K ZX 1.9D Aura Morello, 3,000 miles | £9995 |
| 1992/K ZX 1.9D Advantage, 5 door auto, 4,500 miles, red | £9795 |
| 1992/K ZX 1.9 Turbo Diesel Advantage, 5 door, atlantic green | £9995 |
| 1992/K ZX 1.4 Reflex, 5 door, blue, 5,000 miles | £6995 |

STAR CAR



1987/D CITROËN 2CV DOLLY, finished in white and green, outstanding condition with 5,800 miles only..... £2495

THE SERVICE CENTRE

ELMTREE ROAD TEDDINGTON 081-977 7799

SPECIAL OFFER FOR B.F.C. SUPPORTERS

OIL & FILTER CHANGE

| | | |
|-------------------------|---|--------|
| Up to 2.0 Litre engines | - | £17.50 |
| Over 2.0 Litre engines | - | £20.00 |

(inclusive of VAT)

PLUS MOTs at £14.50



PENALTIES

By FRANK COUMBE

Ever since I've supported The Bees I've always felt that we haven't been awarded our fair share of penalties. It's often said that a successful side get more because they attack more but that one can easily be shot down. Last season we were Third Division Champions with 'Deano' and 'Bliss' scoring regularly and our attacking play being a delight to watch. How many penalties did we get? Two!

Another argument is that crowds win penalties by shouting for every potential penalty following a tackle. This point might hold a little sway as over the years the Brentford crowd have been noted for their loyalty but not their noise.

In this article I propose to look back over the seasons from 1985/86 and highlight just how many penalties we have had. In 1985/86 we had the grand total of five, two in the Milk Cup and three in the League!

Robbie Cooke scored his first Brentford penalty in the Milk Cup tie against Cambridge but then missed, also in the Milk Cup, by hitting the post against Sheffield Wednesday. Steve Butler took our first League penalty of the season against Chesterfield but curled it high and wide, this transpired to be the only penalty he took for us. Andy Sinton took over for the game against Bury and scored the last minute penalty on his debut. His next penalty, against Notts County, was missed when he shot over the bar.

1986/87 again saw just five penalties for Brentford. All were in the League and all were converted. Robbie Cooke took over again as the spot kicker and scored on the opening day of the season against Bournemouth, in the 5-3 win over Darlington and the 2-0 victory at Bolton. The Bees' next penalty came in the home game with Chester. With Robbie out injured new signing Gary Blissett emulated Sinton by scoring a spot kick on his debut, Gary scored his second Brentford penalty on the last day of the season against Wigan.

1987/88 saw The Bees awarded just three penalties! Robbie Cooke converted the first two (against Northampton (A) and Chesterfield (H)). When Brentford had a penalty against Wigan Andy Sinton took the kick. Robbie Cooke had been sold to Millwall for £30,000 and Gary Blissett was suspended, however Andy tucked the penalty away to

record a 100% success rate for the club for the second season running.

In 1988/89 we got nine penalties, all in the League and achieved a 66.66% rate. Gary Blissett had a penalty saved against Wigan and then relinquished the job. Andy Sinton took over again and scored against Sheffield United. When The Bees were awarded another spot kick in the same game Keith Jones took it and a certain Graham Benstead saved it. Andy Sinton then scored penalties against Gillingham (home) and Reading (away). He then missed one at Mansfield before scoring another against Reading (home). Incidentally his two successes against Reading were past former Brentford 'keeper Gary Phillips. After Andy's £350,000 move to Q.P.R. Brentford's final two penalties were scored by Allan Cockram in 3-0 wins at Blackpool and at home to Bristol City.

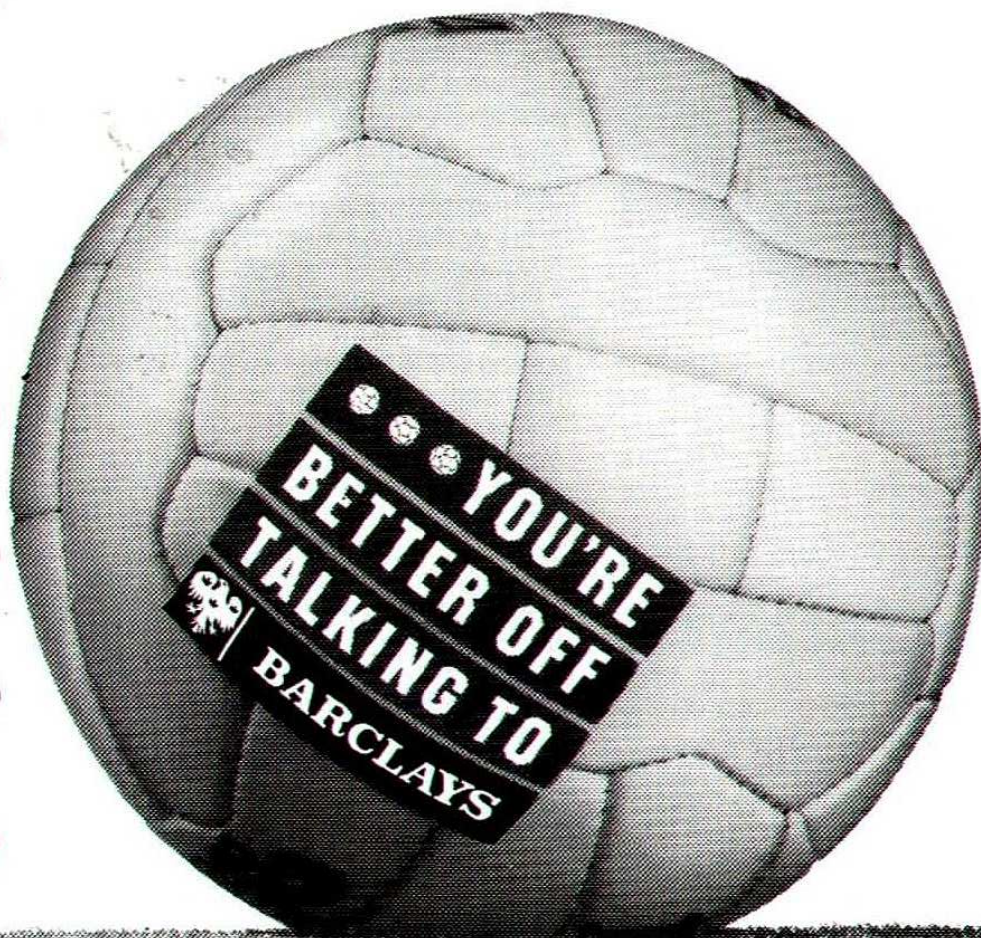
The 1989/90 season saw just four penalties awarded to The Bees, and half of them were in one game! Sub Allan Cockram took the first against Bristol City, strangely the last club we'd been awarded a spot kick against (see above). Unfortunately his effort was saved. Against Leyton Orient Dean Holdsworth took two penalties. He scored his first but Paul Heald saved the second. Dean converted our final penalty of the campaign in a win at Mansfield.

1990/91 saw just six Bees' penalties. Keith Jones, two years after his previous miss, scored in the last minute to secure a draw at Swansea and then scored again in a Rumbelows Cup Tie against Sheffield Wednesday before missing in a League game against Cambridge. Dean Holdsworth converted at Tranmere before Gary Blissett scored against Wigan. (Amazingly this was the fourth penalty awarded to Brentford in five Griffin Park meetings with Wigan). Gary was successful again on New Year's Day against Shrewsbury.

Brentford's next penalty came 11 months and 25 days later on Boxing Day 1991 when Gary converted at Huddersfield. Dean Holdsworth scored our only other penalty of 1991/92 against Chester.

Already this season we've been awarded 7 penalties with Blissett (one out of three), Bennett (nought out of one) and Allon (three out of three) the takers. Maybe we'll get a few more before the season's over.

Whatever your goal...



NEWS AT ONE

Former England striker Mick Harford joined his eighth club last week, when his home town side Sunderland bought him from Chelsea for £250,000.

Harford has been a Football League player for sixteen seasons, and numbers Newcastle, Birmingham and Derby amongst his other clubs. He arrived at Chelsea from Luton for £300,000 in August. The 34 year old, rejected by The Rokerites as a youngster, has signed a two year deal and said: "There was only one club I would have left the Premier League and the south for, and that was Sunderland." He is manager Terry Butcher's first signing since becoming Roker Park boss last month, and Butcher commented: "I wanted a Harford type forward and ended up getting the real thing!"

Meanwhile last Saturday's opponents Birmingham made yet another signing as they bought Notts County's former Exeter defender Richard Dryden in a £165,000 deal. Birmingham's manager Terry Cooper managed Dryden at St. James Park previously. City also sold full back Paul Holmes to Everton for £100,000.

Two men who appear to be staying put at the moment however, are Wolves' Steve Bull and Oxford's Joey Beauchamp. Bull is set to sign a new contract that will keep him at Molineux until 1999, despite interest from Aston Villa and Newcastle. Bull is now a cult figure at Wolves after costing a paltry £35,000 from West Brom in 1986. He has become the club's all time record goalscorer, played for England, and even bought an executive box for his family and friends to watch him from. Beauchamp meanwhile was the subject of a £1 million bid from Wimbledon which The U's rejected. The 22 year old winger had only recently signed a new two and a half year contract at The Manor Ground.

In London, West Ham manager Billy Bonds has signed South-

ampton striker David Speedie on loan until the end of the season. The former Scottish international and Chelsea player has had loan spells this season at both Birmingham and West Brom. He could step into Clive Allen's boots, as the former QPR player is set to miss most of the rest of the season through injury. Definitely out until the new campaign is Hammers' centre half Alvin Martin, who ruptured an achilles tendon in a reserve game.

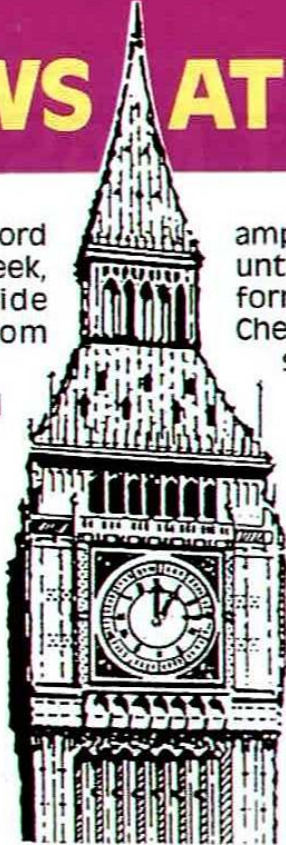
Meanwhile Derby bowed out of the F.A. Cup when they lost their Quarter Final replay 1-0 at Sheffield Wednesday. The First Division's last survivors held The Owls 3-3 at the Baseball Ground in a thrilling first game.

Derby are one club considering moving to comply with the Taylor Report, but Barnsley's response has been to build a new 7,324 seat stand. The two tier construction was opened for the 3-2 defeat by Leicester three weeks ago, and also incorporates twelve executive boxes and five specially designed viewing lounges. It cost £2.5 million with the help of the Football Trust. The Tykes have already sold 700 season tickets, and adults pay just £7 for an upper tier seat. Oakwell now has almost 9,400 seats in a capacity of over 27,300.

Newcastle are also starting redevelopment at St. James' Park to convert the Leazes End terrace into a new stand with 11,500 seats. It will replace the 4,000 standing spaces there, and double the ground's seating capacity.

Meanwhile Charlton have installed a new £15,000 water sprinkler system at The Valley. It has thirteen sprinklers sited around the edge of the pitch which are computer controlled to allow a timing device to come on at preset times for any length of time.

Finally the transfer deadline passed 48 hours ago and this column in the Sunderland Gazette will cover all the last minute deals in the First Division.



News-caster
IAN WESTBROOK



PAST MASTER

JIMMY GABRIEL



Past Master Profilee today is the gritty 1960s and 1970s blond haired wing-half Jimmy Gabriel, – a full Scottish International who made his mark on the game during spells at Dundee, Everton and Southampton but who also served Bournemouth and for the purposes of this article played in the twilight of his career for both Brentford and Swindon Town as well. Born in Dundee on Wednesday, 16th October 1940 he followed in the footsteps of his father (who played for East Fife and Forfar Athletic) when winning Scottish schoolboy honours and learnt the game with Junior sides: Lawside Academy, Tyne-castle Boys Club and Dundee North End, before joining Dundee F.C. itself in 1957. He quickly broke in to their Scottish League side and then in November 1959 won the first of his 6 under-23 caps when appearing in the Scottish side held to a 1–1 draw by Wales in Wrexham.

He eventually totalled 55 League outings for Dundee but was brought South to Everton in March 1960 on a £30,000 fee, and embarked on a golden 7 year Goodison period during which he won winners' medals in both the League Championship (1962/63) and F.A. Cup (1965/66) as well as amassing 256 League outings (33 goals) and 2 full Scottish caps: – v Wales, at Cardiff in October 1960 and v Norway at Hampden Park in November 1963.

He moved from Everton to Southampton for £45,000 in July 1967 and spent 5 years there, clocking up a further 191 League outings (25 goals), before moving out of the First Division in July 1972 when signing for Bournemouth.

His competitive defensive skills and knowledgeable reading of the game were still in demand at this lower level and he made 53 League outings in two seasons at the Dean Court Club. He found himself somewhat out of favour at the club during the 1973/74 season though

and was allowed to leave firstly on loan to Swindon Town in October 1973 (where he played in 6 Second Division games during a 2 month spell) and then in March 1974 to Brentford on a free transfer. His actual transfer to us in fact involved a small piece of football soccer history, as his signing-on forms were faxed through by us from an office in The City of London to the Football League's headquarters at Lytham St. Annes. This was the first time such a fax machine had been used to ensure they arrived in time for the 48 hour matchday deadline.

Joining The Bees at their lowest ebb for years, Jim debuted in a 1–1 draw at Rotherham on Saturday, 16th March 1974 and made 9 Fourth Division appearances for us

Career League Record

| | APPS | GLS |
|--------------|------------|-----------|
| Everton | 256 | 33 |
| Southampton | 191 | 25 |
| Bournemouth | 53 | 4 |
| Swindon Town | 6 | – |
| Brentford | 9 | – |
| Total | 515 | 62 |

Scottish Under 23 International Caps ... (6)

| | Result |
|--|--------|
| 1. 25th Nov 1959 v Wales at Wrexham | 1–1 |
| 2. 2nd March 1960 v England at Ibrox | 4–4 |
| 3. 20th April 1960 v Belgium at Ghent | 1–1 |
| 4. 6th Dec 1961 v Wales at Wrexham | 0–0 |
| 5. 5th Dec 1962 v Wales at Aberdeen | 2–0 |
| 6. 5th Feb 1964 v England at Newcastle | 2–3 |

Scottish Full International Caps (2)

| | Result |
|---|--------|
| 1. 22nd Oct 1960 v Wales at Cardiff | 0–2 |
| 2. 7th Nov 1963 v Norway at Hampden (sub) | 6–1 |

in total, with his swan-song occurring on Easter Saturday, 13th April 1974 in a goalless away draw at Chester. This being his 515th and last match in League football.

He left Griffin Park at the end of the 1973/74 season to try his luck in the booming North American soccer League with Seattle Sounders and made such an immediate impression that he was voted as the League's all star defender in 1974. He progressed on to coach Seattle to the 1977 U.S. Soccer Bowl Final (where they were beaten 2–1 by a Pélè inspired New York Cosmos) and then spent time coaching in Argentina before returning to the U.S. again in 1979 when appointed as Manager/Coach to Phoenix Fire. They unfortunately folded within a year though and Jim moved on once again in October 1980 when taking charge of San Jose Earthquakes (he held the reigns there in fact in October 1981 when we hammered them 8–2 in a Griffin Park friendly).

Following San Jose Jim gained further coaching experience with the roles of National Coach of Coaches within the U.S. and Coach to the Washington State Youth Association, the special atmosphere of the English Football League obviously never left his blood though and in March 1987 he was lured back to these shores when accepting Harry Redknapp's offer of the Assistant manager's post at Bournemouth. He left the South Coast club in June 1990 to take up a similar position at Everton and briefly in fact filled the managerial role there in October 1990 on a caretaker capacity following Colin Harvey's dismissal. The return of Howard Kendall for a second spell in charge back at Goodison moved Jim backstage again though and he was switched to the post of Reserve Team Coach, a position he still holds at the club today.

JOHN HIRDLE

HOME AND AWAY

BRENTFORD (0) 0 TRANMERE (0) 1

Despite playing well and creating plenty of chances Brentford lost their seventh successive game at home on the trot. The victors this time were Tranmere for whom goalkeeper Eric Nixon had an outstanding game.

The first half saw almost total Bees domination with Luscombe shooting over following a free kick in the fifth minute and then firing a direct free kick over the bar six minutes later. Murray Jones shot well wide on 20 minutes while Gary Blissett failed to get a shot in when put through by a delightful Keith Millen through ball on 36 minutes. The Bees also had two penalty claims when Murray Jones was sent crashing to the ground on each occasion but referee Vanes didn't want to know.

The second period continued with Brentford on top. Alan Dickens had a shot saved on 55 minutes and ten minutes later Nixon saved from a Keith Millen shot from six yards following a Luscombe cross. Jones was surprisingly replaced by Joe Allon on 66 minutes and a minute later Pat Nevin hit a thunderbolt shot that Bees' keeper Graham Benstead did well to touch onto a post. Five minutes later Nevin cut in to round Benstead and score the winner. Despite further efforts by Dickens, Brian Statham and Blissett The Bees just couldn't score an equaliser.

Tranmere had three players booked:- Tony Thomas (foul on Luscombe), Neil McNab (off the ball foul) and Steve Vickers (foul on Jones).

Bees: Benstead, Statham, Bennett, Millen, Bates, Dickens, Luscombe, Manuel, Jones (Allon), Blissett, Stephenson.
Sub: Godfrey.

FRANK COUMBE

CHARLTON (0) 1 BRENTFORD (0) 0

Following the improved performance against Tranmere in midweek The Bees travelled to the Valley with renewed confidence.

And it showed in a first half in which The Bees looked by far the better team. But not for the first time this season, the chances created were not taken.

And a few minutes into the second half Charlton caught The Bees defence napping, and from then on The Bees faced an uphill task.

Those first half chances saw Gary Blissett thwarted as early as the 4th minute by keeper Salmon's legs, whilst a clear run at goal beckoned for Lee Luscombe halfway through the half. But he looked very hesitant and the chance was gone.

Then minutes before the half time whistle a spectacular shot from the same player flew just the wrong side of the post.

On the hour Mark Luscombe may well have levelled the scores when his cross was deflected onto the crossbar.

As the half wore on The Bees powered forward but with less conviction than earlier in the game, whilst the hosts seemed content to rest on their laurels.

A flashing shot by Blissett in the latter stages looked capable of levelling the scores, until Salmon decided to prove otherwise.

And so another game had passed with The Bees failure to score heaping extra burdens on a diminishing number of games.

PETER GILHAM

ALREADY IN THE SUPER LEAGUE


ARCHWAY
P A N B O U R N E

Quality Print Management

145 Sterte Road, Poole,
Dorset BH15 2AF

Tel: (0202) 681466

Fax: (0202) 670010

THERE'S ONLY ONE
MITRE DELTA...
...ONE MITRE DEL-TA.
THERE'S ONLY ONE
MITRE DELTA...



Mitre Sports International Ltd., Bay Hall Works,
Birkby, Huddersfield, West Yorkshire HD1 5AJ.
Tel: (0484) 537488 Fax: (0484) 530042

mitre
International Exporters

TICKET INFORMATION

Barclays League Division One

Saturday, 3rd April, 1993. Kick-off 3.00p.m.

OXFORD UNITED v. BRENTFORD

Oxford United are able to accommodate 400 away supporters in seats at £9.50 and 2,000 on the terrace at £7.00 – no concessions. Entry to the ground will be gained by paying the relevant admission price at the turnstile on the day.

★ ★ ★

Barclays League Division One

Tuesday, 6th April, 1993. Kick-off 7.45p.m.

BRENTFORD v SUNDERLAND

All children under 16 years of age will gain admittance to the ground FREE OF CHARGE for this game. Entry for juniors will be through designated turnstiles on both Braemar Road and New Road. The offer is for both terrace and seats subject to availability. For all other supporters normal pay at the turnstile, entry to the ground will be gained by paying the relevant admission price at the turnstile on the day. No tickets have been printed in advance.

★ ★ ★

Barclays League Division One

Saturday, 10th April, 1993. Kick-off 3.00p.m.

BRENTFORD v DERBY COUNTY

Derby County are able to accommodate 2,600 Brentford supporters on the terrace at £6.00 – no concessions. There are no seats available – entry to the ground will be gained by paying the admission price at the turnstile on the day.

★ ★ ★

EVENING STANDARD FIVE-A-SIDE

WEMBLEY ARENA

Tuesday, 11th May, 1993. Kick-off 6.30p.m.

The cost of the tickets are as follows: £20.00, £17.50, £15.00 and £12.00 and are currently on sale from Griffin Park.

★ ★ ★

The ticket office will be open as follows:
Mondays–Fridays 10.00a.m.–5.00p.m. – when we have a First Team midweek game the ticket office will close at 4.00p.m.

Saturdays (which don't coincide with a home League game) 9.30a.m.–12.00 noon.

All up to date ticket information will be available on Brentford ticket line 0898 12 10 17 – calls cost 36p/minute cheap rate and 48p/minute at other times.

Keep up with the Bees in

Middlesex Chronicle



Brentford's number one supporter

For full match reports and ratings,
get the Bees supporters' bible
every Thursday only 20p
Ring Pat Scrase on 081 570 0469 to
subscribe

BRENTFORD ClubCall

ClubCall
0898 12 11 08

LIVE MATCH COVERAGE
DAILY INTERVIEWS
AFTER MATCH REACTIONS
FIRST FOR NEWS

1ST TEAM PRESENTS

THE LONDON

Evening Standard

5

Five-A-Sides

TUESDAY 11 MAY 1993
WEMBLEY ARENA

SEGA

BOOK NOW CALL WEMBLEY BOX OFFICE 081-900 1234
OR PARTICIPATING CLUB TICKET OFFICES

SWINDON TOWN



GOOD TO HAVE YOU BACK



SWINDON TOWN FOOTBALL CLUB 1992/93

Back row (L-R): John Moncur, Darren Hall, Fraser Digby, Paul Hunt, Nicky Hammond, David Bennett, Craig Maskell, Steve White.

Middle row (L-R): John Trollope (Youth Team Manager), Ross MacLaren, Nicky Summerbee, Colin Calderwood, Shaun Taylor, Adrian Viveash, David Mitchell, Andrew Thomson, Kevin Horlock, Andy Rowland (Reserve Team Coach).

Front row (L-R): Kevin Morris (Physiotherapist), Martin Ling, David Kerslake, Wayne O'Sullivan, Glenn Hoddle (Team Manager), John Gorman (Asst. Manager), Paul Bodin, Shaun Close, Micky Hazard, Eddie Buckley (Kit Manager).

Like many other football clubs Swindon Town have their roots in the church, their founding father being the Reverend William Baker Pitt in 1881.

The new club flourished and won the Wiltshire Senior Cup six times on the trot between 1887 and 1892, the reserves then taking hold of the trophy the following season.

Swindon were by now looking for fresh fields to conquer and in 1894 became founder members of the Southern League, finishing out of contention in 7th place.

The same season saw Swindon set up house at the County Ground and also featured one of only two occasions when they have hit double figures away from home, the luckless victims being Ilford who were crushed 10-0 with Alec Boggie, on his debut, netting five.

Twelve months later Swindon entered the F.A. Cup for the first time, accounting for Watford Rovers before exiting at the hands of Swifts 7-1.

It is not recorded if that was the day three Swindon players were suspended for the rest of the season after turning up drunk!

Swindon were slow getting into their stride in Southern League circles and at the turn of the century twice finished bottom, a situation not helped by an abysmal record on their travels which saw them lose all 26 away league games between November 1900 and October 1902.

Results improved over the next few years, but it wasn't until the arrival on the scene of Harold Fleming in 1907 that Swindon started to make their mark. Harold, who was to win 11 England caps as a Swindon player, was the inspiration behind the side which in the year's leading up

to the First World War took the Southern League title twice, and in 1910 and 1912 reached the semi finals of the F.A. Cup. Swindon showed promise of things to come by finishing runners-up to Northampton in 1909 and Brighton twelve months later before taking top honours in the 1910-11 campaign, Fleming leading their goal charts on 19. Runners-up spot in 1913 preceded another successful tilt at the Southern League championship twelve months later, a success achieved due to a better goal average than Crystal Palace after both had finished level on points.

The same season saw the County Ground welcome its record Southern League attendance of 9,712 for the 5-0 demolition job on Bristol Rovers on Boxing Day. A few weeks later Swindon had their record pre-league gate for the F.A. Cup First Round tie against Manchester United when 18,107 packed the County Ground to see Harold Fleming net the games only goal. Swindon fans had by now become accustomed to their teams giant-killing exploits in the competition and in 1910 Crystal Palace, Burnley, Spurs and Manchester City were overcome before Newcastle beat them 2-0 in the Semi Final at White Hart Lane.

And to prove that was no fluke, Swindon reached the Quarter Finals twelve months later, Chelsea, in front of a mammoth Stamford Bridge attendance of 77,952 standing in their way, before again battling through to the last four in 1912.

Sutton Junction, Notts County, West Ham and Everton were cast aside and Swindon started favourites to make the final when they were drawn against Barnsley.



GOOD TO HAVE YOU BACK

16

The Second Division side upset the apple cart though by holding Swindon 0-0 and then winning the replay 1-0, The Robins missing a penalty.

It was during this period that Swindon first ventured abroad, Barnsley providing the opposition for the Dubonnet Cup in Paris in May 1910, winning 2-1 (Fleming(2)). Swindon travelled further afield two years later when going undefeated in eight games during a pre-season tour of Argentina and Uruguay.

Like Brentford, Swindon were founder members of the Third Division in 1920, a competition in which they retained uninterrupted membership for 43 years until they were promoted as runners up to Northampton in 1963.

In the interim period a number of club records were set. Swindon made a tremendous start to their Football League career by walloping Luton 9-1 in the opening fixture in August 1920, Harold Fleming showing he was still a force to be reckoned with by netting four of them. In goal was Teddy Nash, who like a predecessor at the County Ground, Archie Ling, later played for Brentford and was a Minor Counties cricketer for Wiltshire. Ling played for Cambridgeshire.

Nash was also an onlooker when Swindon outclassed Farnham United Breweries 10-1 in an F.A. Cup tie on the plucky non-Leaguers ground in November 1925 but had moved to Griffin Park by the time The Robins were sending out distress signals when they were on the receiving end of a 10-1 scoreline at the hands of Manchester City in the same competition five years later. There was a Brentford connection in this match too, as at inside forward was Joe Eddleston, later assistant manager to Harry Curtis, and marksman was Harry Morris, top scorer for both Brentford and Millwall in 1922-23 who went on to set Swindon's seasonal goalscoring record in 1926-27 with 47 goals and before moving to Clapton Orient six years later had accumulated a club record 216 league goals.

Whereas Swindon did little of note in their first 40-odd years in the league, it has been a very different story since.

Their first taste of life in the Second Division lasted only two years, but under manager Danny Williams they achieved a tremendous double in 1968-69 by finishing runners-up to Watford in the Third Division title race and beating Arsenal 3-1 (Smart, Rogers (2)) in the final of the League Cup. That success should have earned a tilt at the UEFA Cup, but they were refused entry on the grounds of their status and Arsenal took their place going on to beat Anderlecht in the final.

Swindon, meanwhile, were thrown a crumb of comfort when the Football League sanctioned an Anglo-Italian Cup Winners Cup, The Robins becoming the first holders by beating AS Roma 5-2 on aggregate.

This gave rise to a full blown tournament at the end of the following season between six clubs from each country, Swindon again lifting the trophy by beating Napoli 3-0 away in the final.

Unhappily the match did not run its full course as with Swindon leading 3-0 serious trouble amongst the Italian spectators forced

the referee to call time with eleven minutes remaining.

Skipper of the side during this period was John Trollope and he went on to surpass Jim Dickinson's record of 764 games for Portsmouth, finishing with 770 Football League appearances for Swindon before turning to management. John was awarded the MBE for his services to football and is now the club's youth team manager.

John called it a day in 1980 by which time Swindon were back in the Third Division.

They made a cracking start to the 1982-83 campaign and by October were in pole position. But then it all went wrong and at season's end they headed off for the Fourth Division for the first time in their history.

It took The Robins two years to get back on their feet, creating no fewer than 17 new club records on the way to the Fourth Division crown in 1985-86. Swindon's achievement in amassing 102 points that season is even greater when it is considered that a 1-0 defeat at Hartlepool on 28th September left them in 21st place having lost five of the first eight games. From then on, however, they proved almost unbeatable, winning 30 and losing only three of the next 38 league games to finish 18 points clear of Chester City in second position. Twelve months later Swindon were promoted again and in 1989-90 looked to have made it to the First Division for the first time following a 1-0 victory over Sunderland in the final of the play-offs.

Unfortunately a number of financial irregularities had come to light as a result of which the club was forced to stay down, since when they have failed to sustain another serious challenge for elevation to the top echelons of the game although this term they are well on course for at least the play-offs.

MEETINGS

Bar a few days it is exactly 92 years since Brentford and Swindon first came into contact. The occasion was a Test Match to determine who played in the Southern League First Division the following season, Swindon having finished bottom while Brentford walked off with the Second Division title.

The match ended 0-0, ensuring Swindon's survival but Brentford later made it through the back door when Gravesend United folded.

Brentford opened their first season in top flight by holding Swindon 0-0 away, goals from Stormont and Andrews setting up a 2-0 victory in the return. Brentford and Swindon – with just seven points – filled the two bottom places.

Brentford's first victory against them came the following season, 'Tosh' Underwood netting the goal as The Bees recorded only their second Southern League victory all season.

We were beaten 3-0 in Wiltshire.

Swindon's championship year in 1910-11 saw them held 1-1 here, the Brentford goal being scored from the penalty spot by goalkeeper Archie Ling, who later had a spell at the County Ground.

Brentford were never at the races in the return and ended up on the wrong end of a 3-0 scoreline. Both clubs joined the Football League in 1920, a long fruitless spell on our trips west following, the first point we gained at the



GOOD TO HAVE YOU BACK

County Ground coming from a 1-1 (Phillips) draw in March 1928, the first victory the season after next Cyril Blakemore netting twice in a 2-0 success.

We went our separate ways following Brentford's Third Division South championship year in 1932-33 and next met up in 1954-55 when Stobbart (2), Heath and Towers were the marksmen here in a 4-2 win. We parted company again at the end of the 1961-62 campaign, Swindon sending us on our way to the Fourth Division with a crushing 5-2 (Summers, Francis) victory at the County Ground.

Swindon's next visit came in March 1966 when a late goal from Roger Smart after Brentford had made nearly all the running pushed us to the very brink of the Fourth Division abyss.

The previous month a late penalty scuppered our chances at the County Ground, John Docherty scoring The Bees goal in a 2-1 defeat. Our paths next crossed with points at Stoke in 1978-79 following promotion from the Fourth Division Swindon winning both games 2-0 on home territory and 2-1 (Dean Smith) here in front of a bumper attendance of 13,320.

That victory, with two games remaining, propelled Swindon into the promotion frame but they failed to pick up another point and just missed out. The Robins continued to have the better of the argument over the next few years until relegation befell them in 1982, Brentford helping them on their way with a rare success at the County Ground where Keith Bowen, Gary Johnson and Chris Kamara were on target in a

3-0 victory, and 4-2 here. Terry Hurlock and Keith Bowen gave us a 2-0 interval lead, Stan Bowles, direct from a corner, and Jim McNichol with one of his free kick specials, killing them off.

Swindon were last on our fixture list in 1986-87, The Bees losing 2-0 away before holding the promotion bound Robins 1-1 (Cooke) at Griffin Park.

In between Swindon featured in a Freight Rover Trophy tie which attracted an attendance of just 1,100 – Griffin Park's lowest ever for a senior game. Stevens, Sinton (2) and Carroll were the marksmen in a 4-2 victory.

It was the fourth Cup tie between the two sides inside ten years, Swindon having put us out of the F.A. Cup three times between 1977-83.

In October 1977 a Steve Phillips penalty conversion failed to prevent us losing 2-1 at the County Ground; two years later Swindon again blocked the road to Wembley when they romped to a 4-1 (Smith) victory; whilst it could be argued that from Brentford's point of view the second round tie in December 1982 altered the course of history.

At the time Brentford were going great guns in the Third Division, the Tony Mahoney – Francis Joseph partnership up front proving one of the most productive in the club's history. At the County Ground we came from two down to draw 2-2, substitute Keith Bowen and a last gasp effort from Gary Roberts setting up a replay.

The game was a niggling affair and after Hurlock and Baddeley received their marching orders an accidental collision resulted in Tony Mahoney breaking a leg which sidelined him for ten months. Swindon went on to win 3-1 in extra time and to make matters worse The Bees won just three of the next 15 League games to free fall out of contention.

Quick Quiz: Who does Tony Mahoney now play for?

Answer: Unbeaten Essex Senior League team Canvey Island, who this afternoon take on Tiverton in the second leg of their F.A. Vase Semi Final tie. Tony is the club's leading scorer this season.

GRAHAM HAYNES

VISITING MANAGER GLENN HODDLE

Glenn, one of the most gifted footballers of his generation, joined Swindon as Player/Manager twelve months ago following a three year stint with French club A.C. Monaco. The best days of his playing career were spent at Tottenham.



An England Youth cap, Glenn also played 12 times for the Under 21 team.

He was a regular in the Spurs side which was promoted from the Second Division in 1977-78 and, injuries apart, was a regular at White Hart Lane for eleven seasons helping them to success in the UEFA Cup in 1984, although he missed out on the two-legged final against Anderlecht (Tony Parks, Steve Perryman and Chris Hughton, were all part of that success) and to F.A. Cup glory in 1981 and 1982. Glenn won 53 England caps, scoring on his debut against Bulgaria in 1979 and chalked up more than 500 appearances for Spurs before joining Monaco for £800,000 in July 1987.

STAR VISITOR COLIN CALDERWOOD

Colin is Club Captain and currently the longest serving player at the County Ground having been signed from Mansfield Town for £30,000 in the summer of 1985.

An ever present in Swindon's record breaking Fourth Division championship side in 1985-86 and now its only survivor, Colin has made maximum appearances in four of the last seven seasons and is well on the way to his 400th game in a Swindon shirt.

He found the net six times last season, most from set pieces, to account for almost a third of his total for The Robins, and scored the all important winner against Newcastle a few weeks back.

LOOKING BACK

VISITORS' DIARY

A look at how our opponents have fared over the past 12 months – their dates of destiny.

1992

MARCH

(26) Wimbledon's pint-sized striker Terry Gibson joins the club on loan for the rest of the season. (27) Top scorer Duncan Shearer (32 goals in League and Cup in 1991/92) is sold to Blackburn Rovers for £800,000. (28) A 1-1 draw at Portsmouth leaves Swindon situated in 10th spot in the 2nd Division and with a lot to do to reach the play-offs. (30) Cultured midfielder John Moncur, who impressed whilst on loan at Griffin Park in 1989, is signed from Tottenham Hotspur for £80,000.

APRIL

(4) A 5th minute Tom Jones goal defeats struggling Port Vale 1-0 at The County Ground. (20) 'The Robins' draw their 4th consecutive away fixture when fighting out a goalless draw at Watford. (25) Plymouth born defender Shaun Taylor keeps the sides flagging play-off hopes alive when heading in the only goal of the game against his home town club at The County Ground. (27) A goalless draw at F.A. Cup Finalists Sunderland effectively rules out Swindon's play-off chances – incredibly it is 'The Robins' 12th League draw on their travels, a record only 4th Division Cardiff City could match.

MAY

(2) Swindon conclude their 1991/92 League campaign with a 2-1 defeat at Derby – they finish in 8th place in the 2nd Division table with 69 points from their 46 games, just 5 away from a play-off position. (16) Teenage Gillingham forward Austin Berkley joins the club on a free transfer.

JULY

(9) Reading's live-wire forward Craig Maskell signs for Swindon in an exchange deal involving Tom Jones.

AUGUST

(15) Swindon kick-off their 1992-93 1st Division season with a 1-0 home victory over Sunderland. Player/Manager Glenn Hoddle celebrated his 400th game in League football with the 55th minute winner – his first goal for the club. (19) A thrilling West Country 'derby' with Bristol Rovers at Twerton Park ends in a 4-3 Swindon victory. (29) 'The Robins' good start to the new season continues with a 4-1 home victory over Cambridge United in which Craig Maskell nets a hat-trick.

SEPTEMBER

(1) Swindon, winners of The Anglo-Italian Cup in 1970, start their progress in the 1992-93 competition in fine style when winning 3-1 at Oxford. (5) A late goal from Jon Goodman condemns Swindon to their first League defeat of the season when going down 2-1 at Millwall. (16) Kevin Godfrey's last gasp goal produces a 2-1 Brentford success at The County Ground in The Anglo-Italian Cup, a result eventually meaning elimination for 'The Robins'. (23) Swindon go goal-crazy in The Coca-Cola Cup when winning their 2nd Round 1st Leg tie at Torquay, 6-0.

OCTOBER

(6) A 3-2 home victory over Torquay United completes a comfortable 9-2 Coca-Cola Cup aggregate Swindon success. (17) A crushing 5-1 home victory over Notts County lifts Swindon to 5th place in the early 1st Division table – the match sees first League goals struck for the club by John Moncur, Nicky Summerbee and Kevin Horlock. (24) A late deflected free-kick strike from Craig Maskell earns the club an excellent 1-0 win at West Ham.

(27) Glenn Hoddle's 35th birthday celebrations are turned a little sour as Oldham knock his Swindon side out of The Coca-Cola Cup 1-0 – their 3rd Round County Ground success coming courtesy of a 71st minute Paul Bernard goal.

NOVEMBER

(3) Swindon lose their unbeaten home League record when falling to a 2-0 defeat to Brentford – Gary Blissett and Lee Luscombe getting the goals. (8) 'The Robins' bounce back from this set-back when drawing 0-0 at League leaders Newcastle United – a game which sees stalwart centre half Colin Calderwood complete 300 club League appearances. (14) Hoddle receives the award for 1st Division Manager of the Month for October and then helps his team to a 3-2 home win over Southend United, a result moving them to 2nd place in the table. (27) Tottenham's exciting reserve striker Olisa Morah (who played for England Schoolboys against Brazil at Griffin Park in March 1988) signs for the club on a free transfer.

DECEMBER

(6) Derby County's excellent away form continues as they win 4-2 at The County Ground. (12) 'The Robins' home fixture with Tranmere Rovers is abandoned on 51 minutes following floodlight failure, the visitors having held a 2-1 advantage at the time. (20) Swindon's 4-2 defeat at fellow promotion aspirants Leicester City is doubly disappointing as club captain Calderwood is sent off. (24) Hoddle's Tottenham contacts come to the fore again as he returns to White Hart Lane to take former England Under 21 International midfielder Andy Gray on a month's loan.

1993

JANUARY

(4) Town's Monday night live Sky TV F.A. Cup 3rd Round tie at Queens Park Rangers ends in a 3-0 defeat. (9) The first League win since November 14th is gained as a 34th minute Steve White goal takes the points at Oxford. (26) Ross MacLaren returns to First Team action after 11 months out with a hernia problem, his come-back isn't a winning one though as Grimsby beat 'The Robins' 2-1 at Blundell Park. (30) A 69th minute Paul Bodin goal produces a 1-0 home victory over Wolves.

FEBRUARY

(6) Full back Bodin is on target again as Sunderland are beaten 1-0 at Roker Park in what is Terry Butcher's first match in charge as Player/Manager. Swindon's success is a little lucky however as the home side miss 2 penalties. (13) That man Bodin scores for the 4th game running as Millwall are impressively beaten 3-0 at The County Ground. (23) A David Mitchell brace wins the promotion clash against Tranmere at The County Ground, 2-0.

MARCH

(6) Ace marksman Steve White takes his career League goals tally to an impressive 163 when netting a hat-trick in the 4-0 away win at Watford. (10) David Kerslake, a £110,000 purchase from Queens Park Rangers in November 1989 is transferred to Leeds United for £500,000. (13) Swindon's highest League attendance of the season to date (17,574) see top of the table Newcastle United beaten at The County Ground 2-1. (21) Town slip up with a 2-1 defeat at Derby, but are still handily placed for a play-off spot at the very least.

JOHN HIRDLE



GOOD TO HAVE YOU BACK

PAST RECORD

VISITORS IN FOCUS

Swindon have not made too many changes from the squad which achieved 8th place in the Second Division last season.

England Under 21 goalkeeper **FRASER DIGBY** has made more than 300 senior appearances since being signed from Manchester United for £30,000 at Christmas 1986. He vies for the 'keepers jersey with **NICKY HAMMOND**, a free transfer signing from Arsenal, who also had spells on loan to Bristol Rovers, Peterborough and Aberdeen. **ROSS MACLAREN** cost £140,000 from Derby in 1988 where twelve months earlier he was a member of the Second Division Championship side. **EDWIN MURRAY**, **NICHOLAS SUMMERBEE**, whose father Mike played for Swindon, Manchester City and England, **PAUL HUNT** and **ADRIAN VIVEASH** all progressed through the ranks. Welsh International full back **PAUL BODIN** cost £25,000 from Newport County five years ago and subsequently moved on to Crystal Palace for £550,000 before returning to the County Ground for a fee less than half that figure ten months later. **SHAUN CLOSE** was a £70,000 buy from AFC Bournemouth in September 1989. **MICKY HAZARD** was a team mate of Glenn Hoddle's at Spurs and won F.A. Cup (1982) and U.E.F.A. Cup (1984) medals before joining Chelsea (£310,000) and Portsmouth (£100,000) and cost Swindon £130,000 in September 1990. **AUSTIN BERKLEY** is a former Gillingham player. **MARTIN LING** is in his second spell at the County Ground having also worn the colours of Exeter, Southend and Mansfield. **CRAIG MASKELL** (ex-Southampton and Huddersfield) arrived from Reading last summer in a £250,000 deal which involved Tom Jones moving in the opposite direction. Australian International **DAVID MITCHELL** has also seen service with Eintracht Frankfurt, Glasgow Rangers, Feyenoord, Newcastle and Chelsea. **JOHN MONCUR** cost £80,000 from Spurs and as well as 6 games on loan to Brentford also furthered his experience with Doncaster, Cambridge, Portsmouth, Ipswich and Nottingham Forest. **SHAUN TAYLOR** last season's player of the year, cost £200,000 from Exeter City. And **STEVE WHITE** (ex-Luton, Charlton, Lincoln, Luton) was signed on a free transfer from Bristol Rovers six years ago, since when he has scored in excess of 100 goals for The Robins.

GRAHAM HAYNES

BRENTFORD v SWINDON TOWN THE LEAGUE RECORD

| Season | League | Home | Away | |
|--------|--------|------|------|----|
| 20/21 | Div 3 | 0-1 | 0-1 | DA |
| 21/22 | Div 3s | 3-0 | 1-2 | |
| 22/23 | Div 3s | 3-0 | 0-3 | |
| 23/24 | Div 3s | 2-2 | 1-2 | |
| 24/25 | Div 3s | 0-0 | 0-2 | |
| 25/26 | Div 3s | 3-1 | 1-2 | |
| 26/27 | Div 3s | 2-2 | 2-4 | |
| 27/28 | Div 3s | 1-4 | 1-1 | |
| 28/29 | Div 3s | 2-0 | 1-3 | |
| 29/30 | Div 3s | 3-2 | 2-0 | DF |
| 30/31 | Div 3s | 5-2 | 2-3 | |
| 31/32 | Div 3s | 2-0 | 3-1 | DF |
| 32/33 | Div 3s | 1-0 | 0-0 | |
| 54/55 | Div 3s | 4-2 | 1-1 | |
| 55/56 | Div 3s | 1-2 | 1-0 | |
| 56/57 | Div 3s | 4-1 | 3-1 | DF |
| 57/58 | Div 3s | 0-0 | 1-4 | |
| 58/59 | Div 3 | 2-2 | 1-1 | |
| 59/60 | Div 3 | 2-1 | 0-0 | |
| 60/61 | Div 3 | 2-1 | 1-1 | |
| 61/62 | Div 3 | 1-0 | 2-5 | |
| 65/66 | Div 3 | 0-1 | 1-2 | DA |
| 78/79 | Div 3 | 1-2 | 0-2 | DA |
| 79/80 | Div 3 | 1-3 | 0-4 | DA |
| 80/81 | Div 3 | 1-1 | 0-0 | |
| 81/82 | Div 3 | 4-2 | 3-0 | DF |
| 86/87 | Div 3 | 1-1 | 0-2 | |
| 92/93 | Div 1 | - | 2-0 | |

| SUMMARY | P | W | D | L | F | A | Pts* |
|----------------------|----|----|----|----|----|----|------|
| At Griffin Park | 27 | 14 | 7 | 6 | 51 | 33 | 36 |
| At The County Ground | 28 | 6 | 7 | 15 | 30 | 47 | 21 |
| Total | 55 | 20 | 14 | 21 | 81 | 80 | 57 |

DF = Double For · DA = Double Against
* = 3 points for a win since 1981

CUP MEETINGS

| COMPETITION | SEASON | ROUND | HOME | AWAY |
|----------------------|--------|------------------|------|------|
| F.A. CUP | 77/78 | 2nd Round | | 1-2 |
| | 79/80 | 1st Round | | 1-4 |
| | 82/83 | 2nd Round | | 2-2 |
| | 82/83 | 2nd Round Replay | | 1-3 |
| FREIGHT ROVER TROPHY | 86/87 | Prelim. Round | | 4-2 |
| ANGLO-ITALIAN CUP | 92/93 | Prelim Group | | 2-1 |

THEY PLAYED FOR BOTH

Players to have appeared in League football for both Brentford and Swindon Town since the War (13).

| Player | Brentford | | | Swindon Town | | |
|----------------|-----------|------|------|--------------|------|------|
| | Period | Apps | Gl's | Period | Apps | Gl's |
| Micky Bull | 48-53 | 3 | - | 53-55 | 69 | 15 |
| John Buttigieg | 88-91 | 40 | - | 90 | 3 | - |
| Tommy Dawson | 47-48 | 36 | 10 | 48-50 | 65 | 15 |
| Tony Finnigan | 92 | 3 | - | 91 | 3 | - |
| Micky French | 75-77 | 65 | 16 | 77-78 | 10 | 1 |
| Jimmy Gabriel | 74 | 9 | - | 73 | 6 | - |
| David Geddis | 86 | 4 | - | 88-90 | 10 | 3 |
| Nigel Gray | 84 | 16 | 1 | 83-85 | 33 | 1 |
| Chris Kamara | 81-85 | 152 | 28 | 77-81+85-88 | 234 | 27 |
| John Moncur | 89 | 5 | 1 | 92-* | 16 | 1 |
| Paul Roberts | 83-85 | 62 | - | 85-86 | 27 | - |
| Andy Rollings | 83 | 1 | - | 80-81 | 12 | 1 |
| Pat Terry | 68-69 | 29 | 12 | 67-68 | 61 | 23 |

* As at and including Saturday 20th March 1993.

JOHN HIRDLE



GOOD TO HAVE YOU BACK

Today's Personality

SHANE WESTLEY



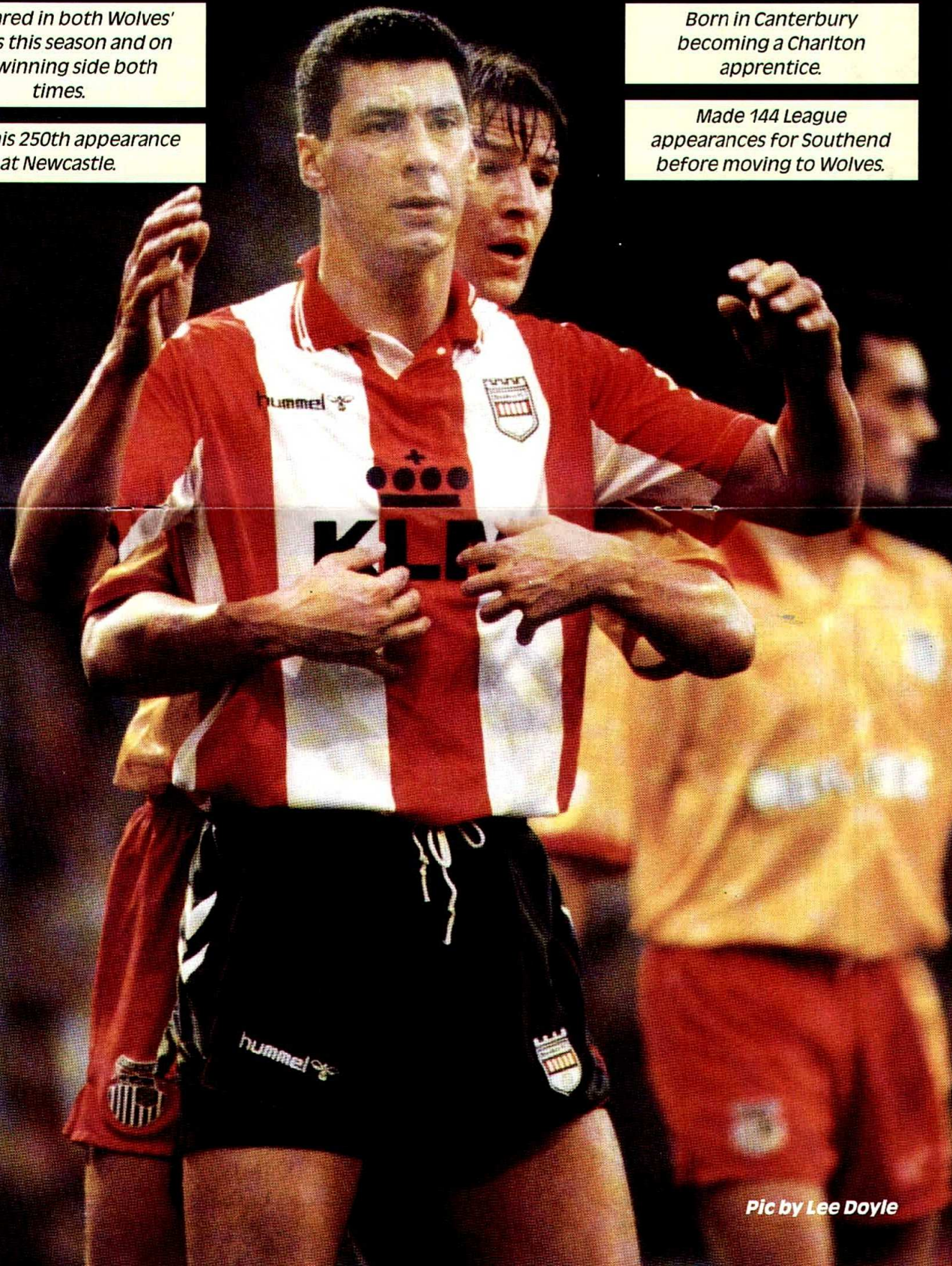
First Team kit available in Club Shop

Appeared in both Wolves' games this season and on the winning side both times.

Made his 250th appearance at Newcastle.

Born in Canterbury becoming a Charlton apprentice.

Made 144 League appearances for Southend before moving to Wolves.

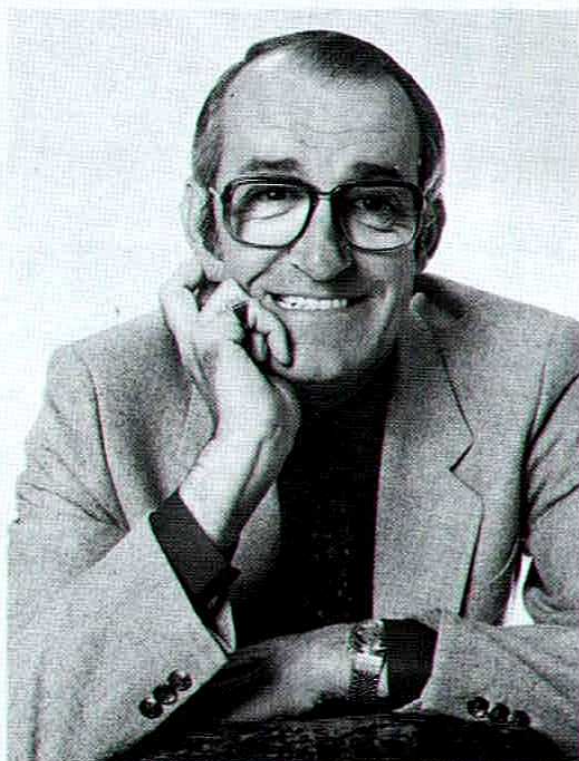


Pic by Lee Doyle



BRENTFORD FOOTBALL CLUB

IN CONJUNCTION WITH THE LIFELINE SOCIETY



present
**An Evening with
JIM BOWEN**

in the
Bee's Inn
on
Monday, 29th March, 1993

*Hear Jim's behind the scenes
Bullseye stories*

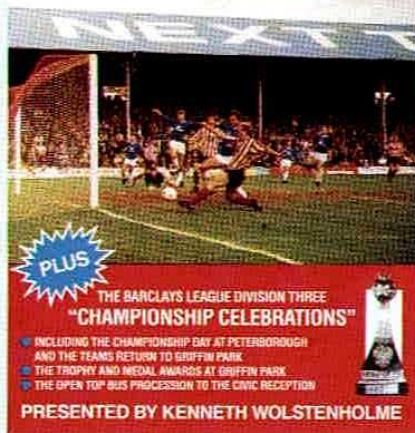
*Competitions,
and try **your** luck at 101*

Three Course Meal
7.00p.m. for 7.30p.m.

Tickets £15.00

Contact Joyce Neate on 081-847 2511
only a few left

Smart Casual Dress



RUNNING TIME 150 MINS

Available NOW from the CLUB SHOP

Goals of the Championship Season 1991-92 "Home & Away"

- INCLUDING THE CHAMPIONSHIP DAY AT PETERBOROUGH AND THE TEAM'S RETURN TO GRIFFIN PARK
- THE TROPHY AND MEDAL AWARDS AT GRIFFIN PARK
- THE OPEN TOP BUS PROCESSION TO THE CIVIC RECEPTION

PRICE **£18.99**

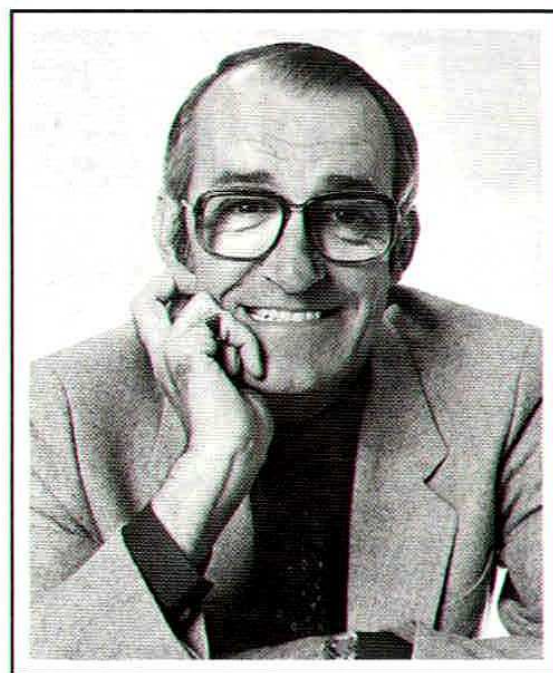


GRIFFIN GOLD'S



FIRST
£1,000
IN CASH PRIZES

being drawn by
JIM BOWEN



THIS Tuesday, March 30th

Hand your membership form in today to guarantee
being included

If you don't know about Griffin Gold ring:

081-569 9050



SOMETHING NEW



24

*Bob Booker seen here wearing a replica of the shirt worn in the Forties and Fifties.
They are on sale now in the Club Shop price: **£31.95.**
Sizes: M. L. and Extra Large.*

LEA-LORE DEAMER



At today's game a cheque for around £1,200 will be presented to Lea-Lore Deamer of the German Shepherd Dog Welfare Fund. The money was raised by Bees skipper Terry Evans from a sponsored swim he did last month.

bred two Champion dogs — Arno of Hanslor and Ritz of Hanslor. "A lot of hard work went into that," she says.

She also started the Welfare Fund off. "I found a German Shepherd running loose and took it in and looked after it until I found it a new home," she recalls. "Other people were doing similar things, and Barbara Fleet suggested to me that we should start up a rescue group and get a list of homes who wanted dogs. We could then match dogs up. We started in 1969 and Barbara applied for us to have charity status in 1977.



We called it the German Shepherd Welfare Fund rather than Rescue as we care for the dogs as well as picking them up. Over the years we've helped thousands of dogs, probably about 350 of them last year."

Lea-Lore continues: "I'm also



THE GENTLE TOUCH

Lea-Lore, who has been involved with the Fund since its inception in 1969, was overwhelmed when Terry rang her to suggest the event. It was their first-ever moment of contact, and Lea-Lore recalls: "I couldn't believe that someone would do something like that on spec. I nearly fell through the floor when he phoned!"

She continues: "He called in February to say he'd heard about us and would we mind if he did something to raise us some money. He explained that he was a professional footballer and that he had two German Shepherds of his own."

Lea-Lore didn't even have any organising to do. "Terry only rang about a week before the swim but he'd already arranged it all himself. I think it's wonderful that he did this."

Terry's love of German Shepherds was featured in his girlfriend Marie Mitchell's 'Gentle Touch' earlier this season and dogs have been a lifelong passion for Lea-Lore. "I've always been keen on dogs," she explains. "We always had small dogs when I was a child, and they're sometimes more dangerous than big ones. I'd always wanted a Shepherd though and my husband bought me my first one Ranee. I decided to get her well trained and took her to an obedience club." Lea-Lore also

fully qualified as an obedience trainer, which took me years to gain the experience. I've been a Championship Show judge too." She now has two artificial knees which restrict her running and cut down her judging opportunities. "When Terry told me about his injury, we had a long chat about knees!"

A few other people have helped out in similar fashion before. "A dog breeder from the North of England ran in the London Marathon two or three years ago to raise us some money," Lea-Lore recalls. "He was a middle-aged guy and took three hours 50 minutes to complete the course. It would be nice to get other people to do things because the dogs need the money, particularly for things like vet bills for the neglected ones we find."

Lea-Lore used to be one of the Fund's Trustees before they were scrapped on the recommendation of the Charity Committee. She will be here today with Fund Chairman John Hibbert and his wife who is Secretary.

"I give general help now and am known as the 'Intensive Care Unit'," Lea-Lore laughs. "It's said that if I can't get the dogs better then no-one can!"

IAN WESTBROOK

SUPPORTERS NEWS

Junior Bees (Supporters) F.C. Under 11's created club history when they reached the semi-finals of the County Cup beating Langley Lions 2-1.

The scorers being Jack Lofthouse and James Royle.

The team being represented by Simon King, Phillip Russell, James Royle, Robert Cain, Ian Clubb, Lee Collins, Andrew Forrest, William Gerrish, Jack Lofthouse, Mark Williams, Wayne Mansfield, Gareth Yates, Ben Wright and Jay Smith.

Elsewhere three of our Under 16's representing West Middlesex Youth League against Hayes, they were Paul Lumm, Clint Vidler and Darren Lake. Our season is winding down, but it is hoped to run squads at the following levels next season, anyone interested should contact:

Under 9's/Under 10's –
Alan Rogers 0753 851819

Under 11's –
Frank Traynor 081-578 1337

Under 12's –
Gary Clubb 081-568 6319

Under 14's –
Vince Ryan 081-994 3925

Under 15's –
Mike Lumm 081-560 7455

The quiz team continues to lose most of their matches, fuller details will appear soon.

National Federation of Football Supporters is holding its conference at Gatwick on the weekend of 12th and 13th June.

Mary Farley wishes to thank everyone who has helped her this season with the Blind/Senior Citizens Scheme and for their kind donations.

A. Rogers, 11 Queen Annes Court, Peasgod Street, Windsor SL4 1DG.

Helping the most important people in football



Football is much more than a game of 90 minutes. Every day clubs throughout Britain are providing recreational and sporting opportunities for their local communities.

Much of this has been achieved with the help of the Football Trust. As part of its commitment to Football, The Trust has granted £4M to set up the National Football and Community Development Scheme.

Bringing club and community together, Trust-backed initiatives have provided a variety of local amenities, including:

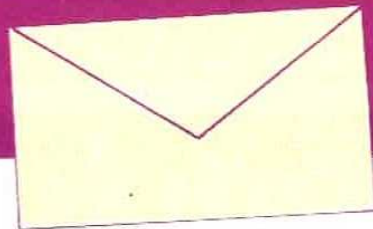
- Artificial pitches for local teams
- Coaching for youngsters
- Support for women's football
- Facilities for people with disabilities

The Football Trust is helping the game at all levels.



THE FOOTBALL TRUST
Helping the game

IN OFF THE POST



Mr. Martin Spong
Brentford Football Club
Braemar Road
Brentford
Middlesex

London Appeals Centre
5th March, 1993

Dear Mr. Spong,

Just a quick note to say thank you very much indeed for carrying out a collection for us at the Brentford v. Peterborough United match. By doing the collection yourselves, you saved us an awful lot of aggravation, man-power and organisation at the same time as raising a lot of money for us.

The total figure of £1,234 is most impressive; an eloquent testimony both to the esteem in which Bobby Moore was held, and the emotive personal commitment that so many people have to the cause of cancer research.

A series of high profile events are being developed as part of the fundraising in aid of Imperial Cancer in memory of Bobby Moore. We will of course keep you informed. Please pass our thanks on to the collectors and the fans who gave. Their support is really appreciated particularly in these recessionary times. We are, as a charity, overwhelmingly dependent on public generosity for the money we need to fight cancer. The sum raised at your ground has made a significant contribution to that fight.

May I, on behalf of John Davies and all the London Appeals team, thank all of you at Brentford for your support.

Yours sincerely,

JANE ARNELL - London Appeals Director

Keith Loring, Esq.

Chief Executive
Brentford Football Club
Griffin Park, Braemar Road
Brentford, Middlesex

Civil Service College
Management in Government
10th March, 1993

Dear Mr. Loring,

I am writing to thank you for seeing students from the college at such short notice on the 10th March as part of

research into some of the differences between the private and public sectors. The students presented their findings in the form of presentations that afternoon and contributed to useful discussions leading to a greater understanding of these differences.

None of this would have been possible without your positive reaction to the original short notice request and I am grateful for time and assistance.

Yours sincerely,

ALAN WREN

☆ ☆ ☆

3 Parsonsfield
Salford 6
Manchester
M6 6HT

Dear Editor,

I hope you can give a mention in your programme to three of your most loyal supporters, who live, eat and breathe Brentford F.C.

I myself am an ardent Manchester United fan, who had only heard of Brentford because of Stewart Houston, all them years ago we bought him off you. I met my friend while in Spain on holiday last year and he is Brentford mad. His name is Kevin Fogden and he goes to all the home and away matches with his two boys Nicky and Perry. He has another boy who is only two years old but he has got him shouting Brentford already. I must say I have now adopted Brentford as my second team. He sends me up north the programmes and fanzine magazines, I can honestly say I think they are a great read.

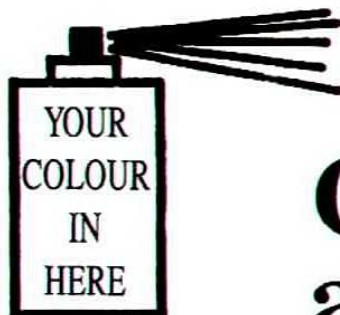
My main ambitions now are for Man. Utd. to win the League and maybe next year for Brentford to get promotion to the Premier League. After all we don't want Wimbledon in the Premier League, I think Brentford's football is more attractive for the Premier League.

Once again thanks for your help, and please mention Kevin Fogden, Nicky Fogden and little Perry Fogden.

Yours faithfully,

STEVE MULLICAN

(Ardent Red Devil and adopted Bees' fan).



**Your No. 1 supplier of
Refinishing Products**

Car Paint and Panel

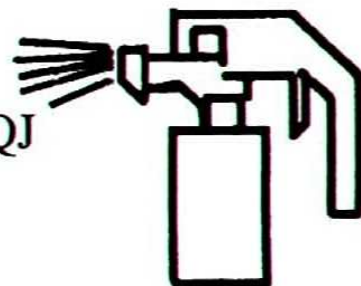
169 Boston Road Hanwell London W7 3QJ

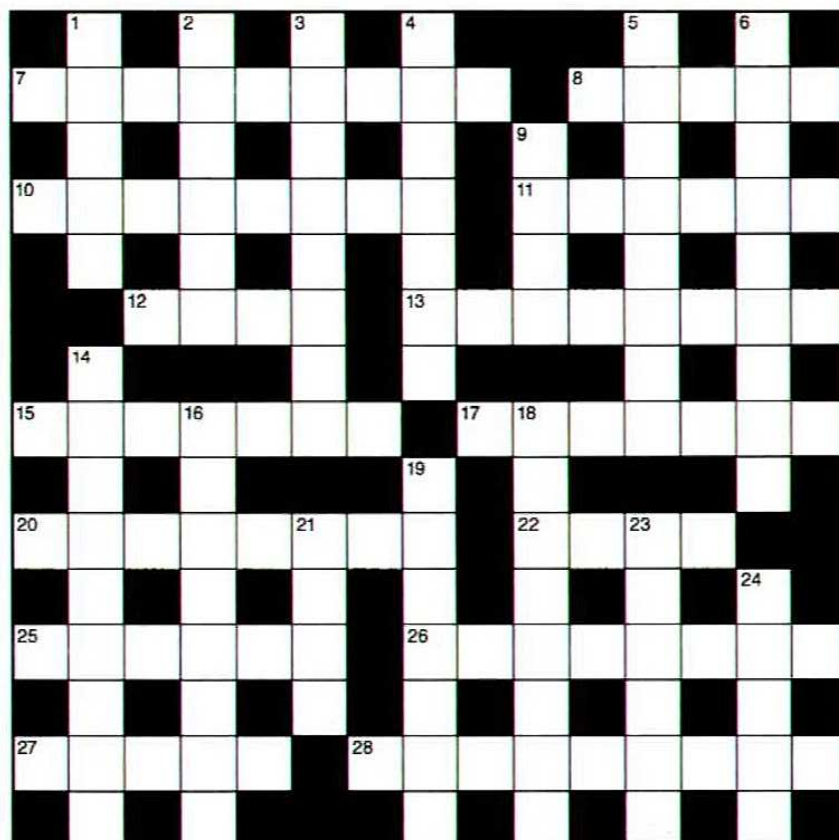
Telephone:

(081) 579 3381

Fax:

(081) 567 5158





Another D.J. Crossword

ACROSS

7. Third Division venue (5,4)
8. You can see two even before kick-off! (5)
10. Got the better of or was got the better of! (8)
11. Are this team's players in search of female conquests? (6)
12. & 23. Down. Romantic place to watch St. Mirren play (4,6)
13. He's guaranteed some sort of cup medal (8)
15. Their survival can sometimes swing a result (7)
17. Ronnie, Blackburn and England in the 50s and 60s (7)
20. Keen watcher of football – from a newspaper (8)
22. The F.A. one is contested each year (4)
25. Do they get broken at Tynecastle? (6)
26. Sounds like Mr. Allison is going to give one a bad time (8)
27. North Eastern park (5)
28. Terry Paine was one of sixteen of these in 1966 World Cup Finals (9)

DOWN

1. They were "Great" in the '92 Euro-Championships (5)
2. Spanish League's current top scorer from La Coruna (6)
3. Del and Rodney at Bolton? (8)
4. F.A. Cup to this city in 1927 (7)
5. A free kick results from it (4,4)
6. They played their last Football League games against 4 Down in 1992 (9)
9. Wembley's towers? (4)
14. Londoners with no home of their own (9)
16. Mr. Foley starts the systems off! (8)
18. Got even – on Yeovil's new pitch? (8)
19. Common blue Midlander (7)
21. Sometimes required for away internationals (4)
23. See 12 Across
24. Did Valentine play for Southampton? (5)

ANSWERS:

ACROSS: 7. Layer Road, 8. Goals, 10. Wolves, 11. Defeated, 12. & 23. Down. Love Street, 13. Finalist, 15. Fittest, 17. Clayton, 20. Observer, 22. Vase, 25. Hearts, 26. Maltreat, 27. Roker, 28. Nineteens.
DOWN: 1. Danes, 2. Bebebe, 3. Trotters, 4. Cardiff, 5. Foul Play, 6. Aldershot, 9. Twin, 14. Wimbledon, 16. Theories, 18. Levelled, 19. Brummie, 21. Visa, 23. See 12 Across, 24. Saint.

Forward Looking

with **IAN WESTBROOK**

DATE: Saturday, 3rd April 1993.

FIXTURE: Oxford United
Barclays League Division One.

VENUE: Manor Ground, London Road,
Headington, Oxford – 3.00p.m.

PHONE NO.: 0865 61503

CLUBCALL: 0898-12-10-29

HOW TO GET THERE:

SUPPORTERS ASSOCIATION COACHES:

Departure time: 12.30p.m.

Cost: To be Advised.

Location: Layton Road car park.

Booking details: Before or after today's game in the Community Office. Only ring 081-941 0425 if essential.

BY ROAD: Take M40 to J.8 the A40. Take the 2nd exit at roundabout signposted 'Headington'. In ¾-mile turn right into Sandfield Road and then right into Beech Road for the ground. There's no car park and street parking is very limited.

BY RAIL: Pad'gton 12.20 13.20 Oxford 17.15 18.15
Oxford 13.24 14.24 Pad'gton 18.17 19.17

The return fare is £12. The station is three miles away on the opposite side of town. Take a bus or walk to the town centre, and then catch bus 20, 21 or 22 from outside Boots on Cornmarket Street to the ground.

TICKET NEWS: Pay on the day at the Cuckoo Lane End. Seats on the side are £9.50 at turnstile 5 and terraces £7 at turnstiles 6-11. No concessions.

BLIND & DISABLED: No blind facilities but disabled fans are accommodated in a wheelchair area. Please book in advance.

PROGRAMME PRICE: £1.20.

LOCATION OF CLUB SHOP: At the opposite end to the away end. Called 'Top Gear', it's on the corner of Osler Road and London Road.

BEES LAST VISIT: 8th October 1983 – League Division 3 – L 1-2 (Chris Kamara 90).

BEES LAST WIN: 14th November 1981 – League Division Three – W 2-1 (Gary Johnson 7,86).

BEES MANOR GROUND LEAGUE RECORD:

P – 8 W – 3 D – 2 L – 3 F – 10 A – 10

TODAY'S REFEREE

NAME: Vic Callow.

Age (as at 1.8.92): 46.

Occupation: Head of Contractor Support.

Marital Status: Married.

Children's names with ages: Geoff 16, Robbie 13.

When and where commenced refereeing with details of progress to date: Commenced 1966/67 season and progressed via the Mid. Football

Combination and West Midlands (Regional) League. Promoted to the Linesman's list of the Football League in 1975 and the Referee's list in 1979.

Name and date of important matches and in what capacity: Referee: F.A. Youth Cup Final 1986, Leyland DAF Cup Final 1990, England v Sweden U'19, Rumbelows Cup Semi-Final 1991, and 2 Schoolboy Internationals. Linesman: Denmark v Greece (World Cup game), West Germany v Denmark.

MATCH DAY MASCOTS



DANIEL WILLIAMS will lead the "BEES" out today. Daniel is aged 8, attends Oriel School, enjoys football and plays the violin. His favourite player is **MARCUS GAYLE**.



MARK DIXON is Swindon's mascot; he is aged 9, attends St. Mary's School, enjoys all sport and his favourite players are **GLENN HODDLE** and **PAUL GASCOIGNE**.

Have a good time today lads.

TODAY'S MAIN MATCH SPONSOR

KESAK

International Bookmakers

KESAK – der Buchmacher, der Ihre Sprache spricht. Wenn Sie am liebsten auf deutsch wetten, rufen Sie bitte unsere deutsche Abteilung an:

071-387 5361

KESAK ár bookmakern, som pratar ditt språk. Skulle du föredra att göra dina vad på svenska, då ring vår svenska avdelling på telefon:

071-387 2003

KESAK er bookmakeren, som taler dit sprog. Hvis du foretraekker at afgive dine spil på dansk, så ring til vores danske afdeling på telefon-nummer:

071-387 4447

KESAK er bookmakeren, som snakker ditt språk. Foretrekker du å spille på norsk, så ring vår norske avdeling på dette telefon-nummeret:

071-383 3448

KESAK on vedonvälittäjä, joka puhuu Sinun kieliasi. Jos haluat lyödä vetosi suomeksi, niin soita Suomen osastollemme:

071-388 5358

KESAK – the bookmaker that speaks your language

KESAK Ltd has offered betting facilities to overseas customers since 1904. More than 100,000 Europeans bet with KESAK.

NOT SO QUIET FANS

This is the first letter I have ever written concerning Brentford in 16 years as a supporter. The reason I have finally put pen to paper is the constant criticism of supporters by those at the club. This is not a letter to moan about the teams recent poor performances or to have a go at anyone in particular but just to point out the strength of feeling of the supporters. The latest moan came from club skipper Tony Evans in the Middlesex Chronicle. He calls us "a fickle bunch". The gist of Tony's criticism and of certain others in the past (namely Phil Holder, Peter Gilham and Eric White) is "why can't the fans be as vocal at home as they are away," and "how come so called small clubs like Bristol Rovers and Grimsby etc. seem to take over the ground with a small number of fans". Have they ever stopped to consider the logistics of their argument. Namely the fact that we make more noise away from home means that the teams home fans are quiet themselves! i.e. when we go to places like Swindon, Millwall, Luton and Portsmouth there isn't exactly a crescendo of noise emanating from their home supporters either. In fact you can probably count on the fingers of one hand the grounds where a so-called "intimidating atmosphere" is present and that is only generally due to sheer numbers of supporters. Admittedly some recent home games have been particularly quiet, but then the club must decide if the few hundred extra fans they get by moving a game to a Sunday morning is worth the reduced atmosphere an 11.30 Sunday morning kick-off is bound to present.

The answer to the so-called mystery of the quiet home fans is in my mind quite simple when travelling away with your team you have more of an identity and are generally all housed in one small area (in the cases of some generous clubs this is a nice compact covered terrace where the noise you make sounds twice as loud as the noise made by the home supporters even though there are ten times as many of them). The fact that you have bothered to travel away also means you are more likely to vocally support your team than someone who just turns up to home games for something to do. When supporting the side at home however the fans are spread all around the ground and obviously the vocal support diminishes.

Tony Evans also goes on to say that the team need the fans to lift their performances. I would say the opposite also applies. Two games from last year and one from this emphasise my point. Against Swansea and Bury last year and Bristol Rovers this year the team found themselves 2-0 down. However the reaction of the supporters in the Swansea game was completely different to the other two games. We could tell the team were giving their all, we could tell they were confident they could turn things around, we got behind

Personally Speaking

them and we won 3-2. In the other games haven't we looked a defeated side and no amount of support from the terraces can help in that situation. What I'm saying is that the same thing applies to the players lifting the supporters. All it needs is a strong midfield tackle or someone chasing a hopeless cause to end up winning a throw and the crowd *will* react. We won't react to players not giving 100% and as I write I am afraid to say some of them aren't.

For probably only the second time in sixteen years as a supporter I could hold my head high last year. I didn't have to suffer the jokes of workmates every morning and could point to the fact that we were going places. I don't want to have to suffer their jokes again although it has already started to happen. It's no fun having the mickey taken out of you by Fulham supporters I can tell you. Last year I looked forward to going to games, this year I'm afraid the attitude of some of the players seems to be rubbing off on me and I feel I am just going through the motions. I didn't even feel particularly depressed after our 1-0 home defeat by Cambridge and that is probably the first time I haven't after a home defeat in 16 years. All season I had been looking forward to going to Newcastle, however the recent performances have convinced me that the money and time spent on such a trip cannot be justified. Perhaps promotion after watching the team for 15 years in the same division has been a bad thing after all. I could cope with mediocrity having known nothing else before; however now I've tasted success I want more, and if not success at least a sense of passion from the team to match and bring back mine.

So next time anyone is about to criticise the supporters, think about how we "*do*" feel. Think that we've been here longer and will be here longer than anyone currently representing the team. Think what calling us "fickle" really means. Think how we felt going to work on Monday morning with everyone there having seen us embarrassed at Millwall (o.k. we sung through the game but only to hide our shame). And when you ask us to get behind you, realise we will when and only when you give us something to really sing about again.

RICHARD ALLEN

Reserves Review

MIDDLESEX CHARITY CUP FOURTH ROUND Monday, 15th March 1993 v. Uxbridge, Away, Lost, 1-2

Brentford disappointingly crashed out of this season's Middlesex Charity Cup at the Quarter-Final stage with this 2-1 defeat at Uxbridge.

The home side, fielding two former Bees in the shape of Fergus Moore and Nicky Ryder. Predictably enough treated the match as their Cup Final but Brentford's almost entirely professional side, it has to be said in contrast looked rather uninterested and bar a late flourish in the final ten minutes were never really in the game.

The pitch was typically hard and bumpy and the tackles from the home side fast and furious but even so our performance was decidedly below par especially after Paul Buckle hobbled off with a nasty leg injury on fourteen minutes. Terry Evans, Bob Booker and Grant Chalmers returned from injury and Evans incidentally was probably our best player on the night.

To put the flesh on to the bones of the game - Uxbridge took the lead in the 10th minute when Gavin Hughes lobbed over Ashley Bayes following a long through ball, and doubled the advantage six minutes later when Nicky Ryder pounced on a poor Shane Westley back pass and drilled home. The former Brentford Junior later saw a 72nd minute penalty saved by Ashley Bayes and was nearly made to pay for it when we finally came alive in the closing ten minutes - with firstly **Shane Westley** atoning for his earlier error with an 83rd minute goal from a Joe Allon flick, and then Simon Ratcliffe and Bob Booker both going close to forcing extra-time. It was all too little too late though and the home side hung on to go forward to contest a semi-final tie with either Staines Town or Hanwell Town.

To end on, a special mention should be made of Bees supporter Natasha Ward who made the long journey down from Peterborough especially for the game and was to be heard as ever shouting just as enthusiastically at the final whistle as at the first.

MATCH FACTS

Team: Bayes, Buckle, Johnson, Booker, Evans (Capt.), Westley, Godfrey, Ratcliffe, Allon, Chalmers, Peters.

Subs: (14) Tripp (for Buckle 14 mins.)

(17) Ravenscroft (for Chalmers 80 mins.)

(12) Sparks, (15) Brady, (20) Aouf (all unused).

Referee: N. Ludlow (Windsor, Berks.).

Star Player: Terry Evans.

Attendance: 263.

Bees Match Facts:

| | |
|-----------------------------|----|
| Corners | 5 |
| Shots/Headers at goal | 14 |
| Shots on target | 6 |
| Shots off target | 8 |

JOHN HIRDLE

CAPITAL LEAGUE

Wednesday, 17th March 1993 v. Gillingham, Away, Drew, 2-2

Following the off-key display against Uxbridge this was a thoroughly more upbeat and vastly improved display by the Reserves who fully played their part in an excellent game of football which ended in a 2-2 draw.

On a cold, windy, St. Patrick's Day The Bees enjoyed the better of the first half possession but found themselves two goals down on 39 minutes when Gillingham's lively centre forward Steve Crane converted a couple of opportunist strikes. Showing plenty of fight our heads refused to drop though and on 43 minutes we clawed our way back into the match when **Simon Ratcliffe** netted a superb goal - the all action midfielder chipped gloriously home over a bemused goalkeeper following an exquisite edge of the box wall pass with Kevin Godfrey.

Terry Evans, who thankfully grows more like his colossal old self with every game, fired our equaliser on 51 minutes with a

Saturday, 13th March 1993

BRENTFORD 2(0)

BRIGHTON & HOVE ALBION 1 (1)

South East Counties League Division II

Brentford wrapped up their home programme with a worthy win over The Seagulls. Brentford missed a great chance to go ahead in the 10th minute when a ball from Carl Hutchings led a chase between Craig Ravenscroft and the Brighton centre half, the young Brighton keeper missed the ball completely in an attempt to clear leaving an empty goal but the ball was booted to safety.

Thirteen minutes later Brighton took the lead against the run of play after a goalmouth scramble. The half ended with The Bees trailing by a goal. On 65 minutes a Hutchings penalty equalised affairs and with twenty minutes remaining a good move involving Ravenscroft led to substitute Jon Brady scoring to give The Bees three points. Luke Evans, who celebrated his 16th birthday a month before, made his debut at centre forward.

Line-Up: Aouf, Miller, Johnson, Campbell, Bunce, Potter, Ravenscroft, Waltman, Evans, Hutchings, Houghton. Subs: North for Houghton 80 mins., Brady for Evans at half-time.

NEWS: By the time you have read this Brentford will have played their last South East Counties League game at Colchester. A full round-up and review of the Juniors season will begin in the Sunderland Griffin Gazette.

Junior Journal

close range volley from a right wing corner, and in the remainder of the game in an end to end affair led us with gusto to an eventual fair share of the spoils.

Our experienced midfield pairing of Simon Ratcliffe and Detzi Kruszynski were very influential on the night and young Craig Ravenscroft also battled away superbly up front, more than anything this was a good all round team performance though and thanks to both teams enterprise a first class advert for Reserve Team soccer as well.

Our Capital League unbeaten run now stretches to ten games incidentally and with six games left to play a piece of silverware could yet still find its way in to our trophy cabinet at the end of the season.

MATCH FACTS

Team: Aouf, Sparks, Rostron, Westley, Evans (Capt.), Ratcliffe, Kruszynski, Booker, Godfrey, Ravenscroft, Luscombe.

Subs: (12) Tripp (for Rostron 69 mins.)

(14) Chalmers (for Godfrey 62 mins.)

Referee: P. Alcock (Merstham, Surrey).

Star Player: Simon Ratcliffe.

Attendance: 157.

Bees Match Facts:

| | |
|-----------------------------|---|
| Corners | 9 |
| Shots/Headers at goal | 7 |
| Shots on target | 3 |
| Shots off target | 4 |

JOHN HIRDLE

MATCHDAY MUSIC SUPPLIED BY



HMV

KNOW HMV • KNOW MUSIC

HMV STORE, EALING

A GREAT
PARTNERSHIP
BRENTFORD F.C.

AND

hummel 

TEAM UP FOR
SUCCESS



OFFICIAL TEAM KIT & BOOT SPONSORS

THE COMPANIES FOR CHARITY 5-A-SIDE COMPETITION AND SOCIAL EVENT

On **Saturday, 24th July 1993**, Brentford Football in the Community Project are organising a charity 5-a-side competition at the **Beechams Sports Ground, Swyncombe Avenue, Brentford, Middlesex**. The start time on the day is **11.00a.m.** The competition is open to entries from companies, colleges, councils and similar groups and organisations, however, there is no limit to the number of entries from each company/organisation.

- ★ The competition will be split into two categories – male and female. There will be prizes for the winners of each of these sections.
- ★ Teams will consist of squads of 7 players.
- ★ Refreshments will be available for purchase all day and there will be a Bar-B-Que at £2.50 per head.

The object of the day is to have a serious 5-a-side competition combined with a friendly social atmosphere.

- ★ All money raised will be jointly donated between the Teenage Trust Cancer Appeal and MENCAP.
- ★ We would appreciate a quick return of the enclosed entry form.
- ★ The cost to enter each team (seven players) is £60.
- ★ If you have any queries please do not hesitate to contact Martyn Spong in the Community Office on (081) 560 6062.
- ★ All teams entering will obtain ten free seat tickets for a Brentford home fixture during the 1993-1994 season.
- ★ ★ **Entries are limited, please apply early to avoid disappointment.**

We would like to thank 'Power Rod' and 'Smithkline Beechams' for their generous support of this event.

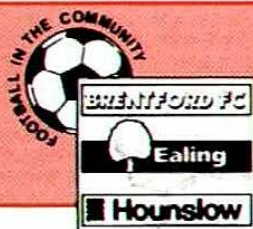
Name of Company/Group:

Contact: Tel No. (Work): (Home):

Contact Address:

No. of Teams (Male): (Female):

*I enclose a cheque/p.o. for £60 (per team) made payable to:
"Football in the Community", Griffin Park, Braemar Road, Brentford TW8 0NT.*



FOOTBALL in the COMMUNITY

Funded by



HALF TIME PRESENTATION

At half time today Mr Jack Turner, a Brentford supporter for over 40 years will be presented with a signed Hundred Years of Brentford Book. This has been organised by fellow supporters Mr Peter Weller, Mr Michael Turner and Mr Michael Homewood as Mr Turner is leaving for Australia. We wish you well and thank you for your support.



N.C.P. FIVE-A-SIDE FOOTBALL AREA FINAL

At today's game Belmont School will play Sparrow Farm School in the N.C.P. Car Parks National Five-A-Side Football Area Final, the winner of which will go to play in the regional competition. Both teams have reached the Area Final by qualifying from heats organised by the Community Scheme at the Fountain Leisure Centre. The eventual finalists of this competition will play Wembley.

WE NEED YOUR HELP!

S.A.S. Registered Charity No. 1013922

FOREIGN COINS?

**THEY HAVE NO GREAT VALUE TO YOU
BUT . . . THEY ARE OF GREAT VALUE TO
THE CHARITY!**

The Charity's aim is to bring knowledge and awareness to everyone about the danger of HIV/AIDS.

YOUR FOREIGN COINS WILL HELP TO PROVIDE THE FUNDS NECESSARY TO ASSIST IN AN ATTEMPT TO REDUCE THE ANNUAL RISE OF HIV/AIDS AND THUS AVOID SOME OF THE MISERY THAT WE ARE CURRENTLY STORING UP FOR FUTURE GENERATIONS.

In anticipation of your help in our endeavours,
THANK YOU

Please return your envelopes on the home game, 6th April 1993 v. Sunderland.

*Collection points will be inside turnstiles.
Volunteers Needed.*

Phone Norman Tompkins 081-940 0523.

Spreading the word and not the virus is the fastest way of alerting people to the ways of protecting themselves and their loved ones from this life destroying disease.

**TODAY'S COMMUNITY COLLECTION IS TO BENEFIT THE
HOUNSLOW FRIENDS OF PORTAGE CHARITY.
THANK YOU FOR YOUR HELP.**



Hounslow

Portage



Under 5's Home Teaching Service

Friends of Portage raises funds to assist in the running of the Hounslow Portage and Under 5's Home Teaching Service which provides Home Visitors to help parents of pre-school handicapped children to teach them skills themselves. They visit the home once a week and also provide toys and advice.

Telephone No. 081-577 5427. The National Portage Association is a registered charity No. 327306.

TODAY'S COMMUNITY MASCOT FROM SWINDON TOWN

Name: Edward Hanson.

Age: 13 years old.

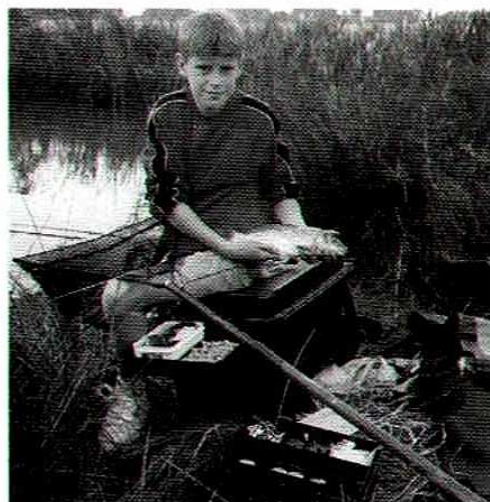
Birthplace: Marlborough, Wiltshire.

Hobbies: Football and Fishing.

Favourite Team: Swindon Town.

Favourite Players: Glenn Hoddle and Frazer Digby.

Details: Edward plays midfield for Marlborough Town Under 14s. He watched his first Swindon Town game in 1987 v. Wigan (Div. 3 Play-Offs), and has been a regular fan ever since. He shares his footballing interests with fishing, and has represented his club and region at national level.



TODAY'S COMMUNITY GUESTS

We would like to extend a warm welcome to St Lukes School from Marlborough who will be guests of our Over 50s Match Day Tea Club and will then be coming on to watch the game in the family stand.

TODAY'S COMMUNITY BALL BOYS AND GIRLS COME FROM BEDFONT JUNIOR SCHOOL AND ST. LAWRENCE JUNIOR SCHOOL

Bedfont Junior School is delighted to be helping out again. We are situated to the west of Hounslow, near to Heathrow Airport and with 280 children we have a huge field and large playground.

The school runs football, netball, rounders and athletics teams, as well as going swimming and receiving kwik-cricket coaching. The school teams have been very successful over the past few years with the football team unbeaten in League games for three years (move over AC Milan!), and the girls' team winning the Borough Six-A-Side tournament for the past three years. The local Youth Team, Bedfont United, boys and girls, both practice at school during the summer months. At present one of our pupils represents Hounslow Schools Under 11 side. We are fortunate enough to have our kit sponsored by the Kit Selection Shop in Bedfont.

However, it's not all sport, as well as music tuition in cello, violin and guitar, there are bhangra dancing, choir and French conversation lessons alongside the main classroom activities.

Finally, we would recommend any school to visit Brentford Football Club, half of our children have already done so, and they, staff and parents had a brilliant day. Well done Brentford!

St. Lawrence is a Roman Catholic Junior, Infant and Nursery School in Feltham. We have 430 Pupils aged between 3 and 11 years.

We are situated next to St. Lawrence Church and overlook the pond and the Green on Feltham High Street.

The school opened in 1934 and we celebrate our Diamond Anniversary (60 years) next January.

There are 18 teachers and 27 non-teaching members of staff. Our Headteacher is Mr. D. J. Doyle.

We are currently trying very hard to raise £35,000 to buy two new classrooms to expand our school and we hope they will be in use next September. Our mums and dads belong to the P.T.A. which is very active in raising funds and organising social events.

We have our own school minibus, which is funded by our parents through money raised in our 200 Club. We use the minibus for local visits, matches and excursions.

Our school is very keen on all sports and we do particularly well at Football, Netball, Rounders and Swimming.

Many of our pupils and their parents are Brentford Supporters and we wish the Bees well for the rest of the season.

TWO EXAMPLES OF THE COMMUNITY SCHEME DESIGN A KIT COMPETITION

In promoting Community Scheme Football Courses, children are given the opportunity to enter design a Brentford Kit Competition. Shown below are examples of the high standard of entries received. Winners of the competition are guests at today's game.

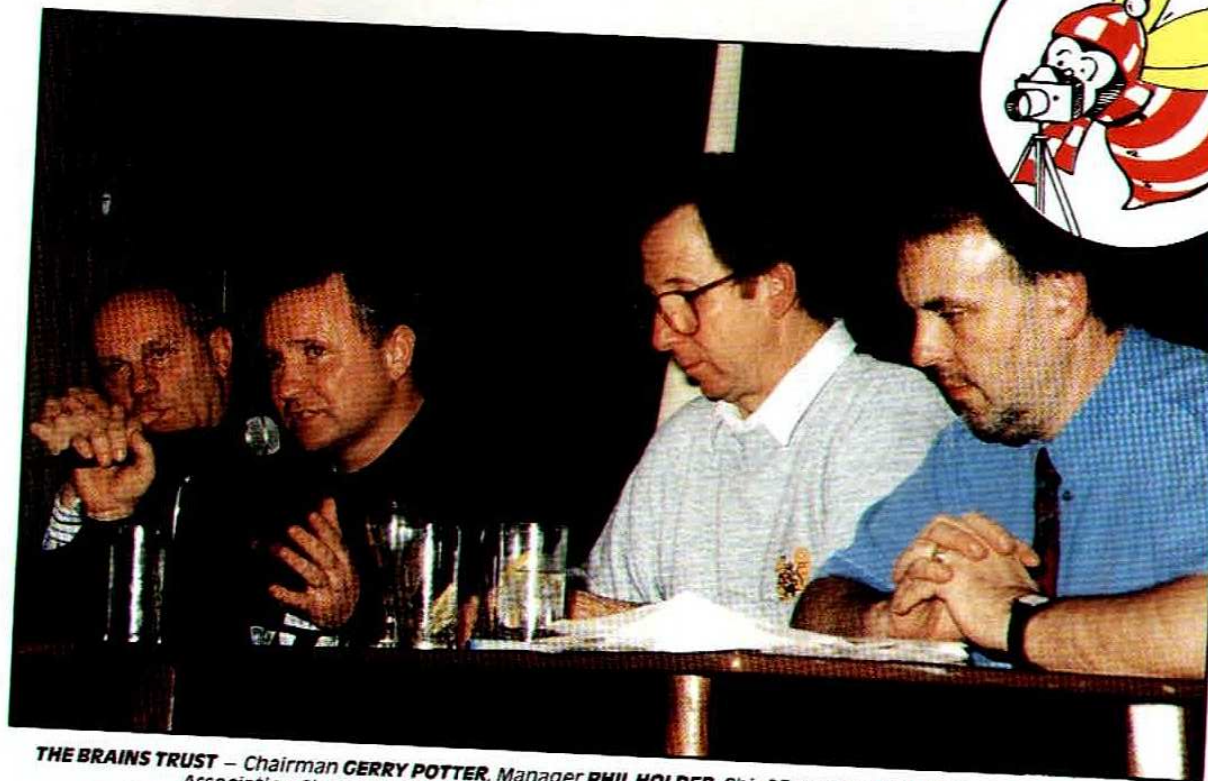
Well done.



JAMES IRONS
AGE 8
Year 3.



LESA THOMAS
Year 5.



THE BRAINS TRUST – Chairman **GERRY POTTER**, Manager **PHIL HOLDER**, Chief Executive **KEITH LORING** and Supporters Association Chairman **PETER GILHAM** answers supporters questions at a recent forum.

Bees in ACTION

Pics by **NIGEL TEMPLEMAN**.



PETER GELSON who made 514 appearances for us presents **ELLEN CONNOLLY** with a £1,000 cheque as a lottery winner.



MATCH TO

BRENTFORD F.C. LEAGUE DIVISION ONE

● Matches at Griffin Park

C.C.C. denotes Coca-Cola Cup
F.A.C. denotes Football Association Cup
A.I.C. denotes Anglo Italian Cup

| | | LEAGUE POSITION | RESULT | ATTENDANCE | BENSTEAD | STATHAM | HUGHTON | MILLEN | EVANS | RATCLIFFE | BENNETT | ROSTRON | GODFREY | BLISSETT | SMILLIE | CAYLE | JONES | BATES | BOOKER | KRUSZYNSKI | MANUEL | BAYES | LUSCOMBE |
|--------------|---|-----------------|--------|------------|----------|---------|---------|--------|-------|-----------|---------|---------|---------|----------|---------|-------|-------|-------|--------|------------|--------|-------|----------|
| Aug. | Sat 15 ● Wolverhampton Wanderers | - | 0-2 | 9,069 | 1 | 2 | 3 | 4* | 5 | 6 | 7 | 8 | 9 | 10 | 11 | 5s | 9s | | | | | | |
| | Tue 18 Fulham (C.C.C. 1(1)) 7.45pm | - | 2-0 | 5,067 | 1 | 2 | 3 | 4* | | 6 | 7 | | 9 | 10 | 11 | 10s | 9s | 5 | 8 | | | | |
| | Sat 22 Bristol Rovers | 21 | 1-2 | 5,779 | 1 | 2 | 3 | 4 | | 6 | 7* | | 9 | 10 | 11 | 9s | | 5 | 8 | 6s | | | |
| | Tue 25 ● Fulham (C.C.C. 1(2)) | - | 2-0 | 4,806 | 1 | 2* | 3 | 4 | | 6 | 7 | | 6s | 10 | 11 | 9s | 9 | 5 | 8 | | | | |
| | Sat 29 ● Southend United | 18 | 2-1 | 6,431 | 1 | 2 | 3 | 4 | | 6 | 7* | | 9s | 10 | 11 | 15 | 9 | 5 | | | 8 | | |
| Sept. | Tue 1 ● Portsmouth | 8 | 4-1 | 8,471 | | 2 | 3 | 4 | | 6 | 7 | | 12 | 10 | 11* | 9 | 14 | 5 | | | 8 | 1 | |
| | Fri 4 Cambridge United | 11 | 0-1 | 5,075 | 1 | 2 | 3 | 4 | | 6 | 7 | 8s | 11s | 10 | 11 | 9 | | 5* | | | 8 | | |
| | Sun 13 ● Luton Town 12 noon | 15 | 1-2 | 7,310 | | 2 | 3 | 4 | | 6* | 7 | | 12 | 10 | | 9 | 11 | 5 | | | 8 | 1 | 11s |
| | Wed 16 Swindon (A.I.C.) | - | 2-1 | 3,189 | | 2 | 3 | 4* | | 6 | 7 | | 10s | 10 | | 9 | | 5 | | 8 | | 1 | 11 |
| | Sat 19 Leicester City | 17 | 0-0 | 12,972 | | 2 | 3 | 4 | | 6 | 7 | | | | 10 | 9s | 9 | 5 | 11s | 8* | | | 11 |
| | Mon 21 Tottenham Hotspur (C.C.C. 2(1)) | - | 1-3 | 19,365 | | 2 | 3 | 4 | | 6 | | | 14s | 10 | 11 | 9 | | 5 | 6s | 8 | | 1 | 7* |
| | Sat 26 ● Millwall | 16 | 1-1 | 8,823 | | 2 | 3 | 4 | | 6 | | | 9s | 10 | 7 | 9 | | 5 | | 8* | 11s | | 11 |
| | Tue 29 ● Oxford (A.I.C.) | - | 2-0 | 2,607 | | 2 | 3 | 4 | | 6 | | | 9* | 10 | 11 | 7s | | 5 | | | 8 | | 7 |
| Oct. | Sun 4 ● Newcastle United | 19 | 1-2 | 10,131 | | 2 | 3 | 4* | | 6 | 7 | | 9 | 10 | 11 | 9s | | | 8 | 8s | | | |
| | Wed 7 ● Tottenham Hotspur (C.C.C. 2(2)) | 19 | 2-4 | 11,445 | | 2 | 3 | 4 | | 6 | 7s | | | 10 | 11 | 9 | | 5 | | | 8s | 1 | 7 |
| | Sat 10 Peterborough United | 19 | 0-0 | 5,818 | | 2 | 3 | 4 | | | 7 | | 7s | 10 | 11 | 9 | | 5 | | | 8 | | 9s |
| | Sat 17 ● Watford | 20 | 1-1 | 8,490 | | 2 | 3 | 4 | | | 7 | | | 10 | 11 | 9 | | 5* | | | 8 | | 7s |
| | Sat 24 Barnsley | 21 | 2-3 | 4,928 | | 2 | 3 | 4 | | | | | | 10* | 11 | 9 | 7s | 5 | | | 8 | | 9s |
| | Sat 31 ● Bristol City | 19 | 5-1 | 8,726 | | 2 | 3 | 4* | | 6s | | | | 10 | 11 | 9 | 7s | | | | 8 | | 7 |
| Nov. | Tue 3 Swindon Town | 18 | 2-0 | 7,832 | | 2 | 3 | 4 | | 6 | | | | 10 | | 9 | 9s | | | | 8 | | 7 |
| | Sat 7 ● Charlton Athletic | 16 | 2-0 | 9,354 | | 2* | 3 | 4 | | 7s | 14 | | | 10 | 11 | 9 | | | | | 8 | | 7 |
| | Wed 11 Ascoli (A.I.C.) | - | 3-1 | 880 | 13 | 2 | 3 | 4 | | 16 | 7 | | 11s | 10 | | 9* | 10s | 5 | | | 8 | | 11 |
| | Sat 14 Tranmere Rovers | 16 | 2-3 | 7,852 | | 2 | 3 | 4 | | 6 | 7 | | 11s | 10 | | 9 | | 12 | | | 8* | | 11 |
| | Sat 21 ● Grimsby Town | 17 | 1-3 | 7,439 | | 2 | 3 | 4 | | 3s | | | | 10 | 11 | 9 | | | | | 8 | | 5s |
| | Tue 24 ● Luchese (A.I.C.) | 17 | 1-0 | 4,339 | 20 | 2 | 3 | 4 | | 6 | 7s | | 15 | 10 | 7 | 11s | | 5 | | | 12 | | 11 |
| | Sat 28 ● Oxford United | 17 | 1-0 | 8,017 | | 2 | 3 | 4 | | 8 | 11 | | 11s | 10* | | 9 | | | | | 6 | | 9s |
| Dec. | Sat 5 Birmingham City | 12 | 3-1 | 8,582 | | 2 | 3 | 4 | | 6 | 11 | | 7s | 10 | | 9 | | 14 | | | 8* | | |
| | Tue 8 Cesena (A.I.C.) | - | 1-0 | 450 | 1* | 2 | 3 | 4 | | 6 | 11 | 16 | | 7s | 10 | | 9 | 14 | 5 | | | 8 | 9s |
| | Sat 12 Sunderland | 11 | 3-1 | 16,972 | | 2* | 3 | 4 | | 6 | 11 | | 3s | 10 | | 9 | | | | | 8 | | 9s |
| | Wed 16 ● Bari (A.I.C.) | 11 | 2-1 | 4,554 | 1 | 2* | | | | | 7 | | 3 | 10 | 8s | 11 | 9s | 5 | | | 8 | | 4 |
| | Sun 20 ● West Ham United 11.30am | 12 | 0-0 | 11,912 | 1 | 2 | | 4 | | 6 | 7 | 8s | 10 | 7s | 11* | | | | | | 3 | | 8 |
| | Sat 26 ● Derby County 12.20pm | 10 | 2-1 | 10,226 | 1 | 2 | | 4 | | 6 | 3* | | | 10 | 11 | | 12s | | | | 8 | | 9 |
| | Mon 28 Notts County | 10 | 1-1 | 6,892 | 1 | 2 | | 4* | | | 3 | | | 10 | 11 | 6 | 7s | 12 | | | 8 | | 9 |
| Jan. | Sat 2 ● Grimsby Town (F.A.C. 3) | 10 | 0-2 | 6,880 | 1 | 2* | | | | | 3 | | | 10 | 11 | 6 | 14 | 12 | | | 8 | | 9 |
| | Sat 9 ● Leicester City | 12 | 1-3 | 8,698 | 1 | 2 | | | | | 9 | | | 10 | | 3 | 12 | 4 | | 8 | 6 | | 11* |
| | Sun 17 ● Millwall | 13 | 1-6 | 7,571 | 1 | 2 | | | | | 9 | | 8s | 10 | | 3 | 14 | 5 | | 8 | | | 11 |
| | Sat 23 Portsmouth | 13 | 0-1 | 10,267 | 1 | | | 4 | | | 9* | | | 8 | 10 | | 3 | 8s | 5 | | | | 3s |
| | Wed 27 ● Derby County (A.I.C.) | - | 3-4 | 5,227 | 1 | 5 | | 4 | | | 2 | | 9 | 10 | | 11s | 14 | 12 | | | 6 | 20 | 11 |
| | Sat 30 ● Bristol Rovers | 16 | 0-3 | 7,527 | 1 | 2 | | 4 | | | 8 | | 9 | 10 | | 11s | | | | 6* | | | 11 |
| Feb. | Wed 3 Derby County (A.I.C.) | 16 | 2-1 | 14,494 | 1 | 2 | | 4 | | | 8 | | 9 | 10 | | 11 | 14 | 5 | | | 6 | 20 | 11s |
| | Sat 6 Wolverhampton Wanderers | 14 | 2-1 | 12,361 | 1* | 2 | | 4 | | | 8 | | 9 | 10 | | 11 | | 5 | | | 6 | | 6s |
| | Tue 9 Luton Town | 12 | 0-0 | 7,248 | 1 | 2 | | 4 | | | 8 | | 9s | 10 | | | | 5* | | | 6 | | 11 |
| | Sun 14 ● Cambridge United 11.30am | 13 | 0-1 | 7,318 | 1 | 2 | | 4 | | | 8 | | 9 | 10 | | | 9s | 5 | | | 6* | | 11 |
| | Sun 21 Southend United | 16 | 0-3 | 4,123 | 1 | 2 | | 4 | | | 8 | | 9 | 10 | | | 7 | 5 | | | 6* | | 11 |
| | Sat 27 ● Peterborough United | 17 | 0-1 | 6,337 | 1 | 2 | | 4 | | 3* | 8 | | 7 | 10 | | | 9 | 5 | | | 6 | | 11 |
| Mar. | Sat 6 Newcastle United (F.A.C. 6) | 17 | 1-5 | 30,006 | 1 | 2 | | 4 | | 3 | 8 | | | 10 | | | 12 | 5 | | | 6* | | |
| | Tue 9 ● Tranmere Rovers | 18 | 0-1 | 7,526 | 1 | 2 | | 4 | | | 3 | | 14 | 10 | | | 9* | 5 | | | 8 | | 7 |
| | Sat 13 Charlton Athletic | 19 | 0-1 | 7,194 | 1 | 2 | | 4 | | 11s | 3* | | | 10 | | | 9 | 5 | | | 8 | | 11 |
| | Sat 20 ● Birmingham City | 22 | 0-2 | 7,532 | 1 | 2 | | 4* | | 6 | 3 | | | 10 | | 11s | 9s | 5 | | | 11 | | |
| | Tue 23 Grimsby Town | 19 | 1-0 | 4,384 | 1 | 2 | | 4 | 5 | 11 | | | | 9 | | 8s | | 3 | 6s | | 10 | | |
| | Sat 27 ● Swindon Town | | | | | | | | | | | | | | | | | | | | | | |
| Apr. | Sat 3 Oxford United | | | | | | | | | | | | | | | | | | | | | | |
| | Sun 4 (F.A.C. 5F) | | | | | | | | | | | | | | | | | | | | | | |
| | Tue 6 Sunderland | | | | | | | | | | | | | | | | | | | | | | |
| | Sat 10 Derby County | | | | | | | | | | | | | | | | | | | | | | |
| | Mon 12 ● Notts County | | | | | | | | | | | | | | | | | | | | | | |
| | Sat 17 West Ham United | | | | | | | | | | | | | | | | | | | | | | |
| | Sun 18 (C.C.C. Final) | | | | | | | | | | | | | | | | | | | | | | |
| | Sat 24 Watford | | | | | | | | | | | | | | | | | | | | | | |
| May | Sat 1 ● Barnsley | | | | | | | | | | | | | | | | | | | | | | |
| | Sat 8 Bristol City | | | | | | | | | | | | | | | | | | | | | | |
| | Sat 15 (F.A.C. Final) | | | | | | | | | | | | | | | | | | | | | | |

MATCH



| BUCKLE | PEYTON | CHALMERS | WESTLEY | ALLON | SPARKS | TRIPP | AOUF | MORTIMER | PETERS | DICKENS | STEPHENSON | GOALSCORERS |
|--------|--------|----------|---------|-------|--------|-------|------|----------|--------|---------|------------|---|
| | | | | | | | | | | | | ★ = Star Player H = Headed Goal |
| | | | | | | | | | | | | Booker (5), Blissett (75H) |
| | | | | | | | | | | | | Blissett (50 pen) |
| | | | | | | | | | | | | Bates (67), Blissett (85) |
| | | | | | | | | | | | | Bennett (7), Millie (64) |
| | | | | | | | | | | | | Bennett (37), Smillie (65H), Gayle (82H), Blissett (84) |
| | | | | | | | | | | | | Blissett (51) |
| 14 | | | | | | | | | | | | Gayle (8H), Godfrey (90H) |
| 1 | | | | | | | | | | | | Blissett (55H) |
| | | | | | | | | | | | | Ratcliffe (39H) |
| 85 | 1 | | | | | | | | | | | Ratcliffe (73), Blissett (88) |
| 1 | | | | | | | | | | | | Blissett (78) |
| | | 8★ | | | | | | | | | | Blissett (21H), Millie (84) |
| 1 | | 6★ | | | | | | | | | | Putney (26 o.g.) |
| 14 | 1 | 6 | | | | | | | | | | Blissett (28, 40H) |
| 7 | 1 | 6 | | | | | | | | | | Millie (17, 47H), Chalmers (44), Blissett (55H, 60) |
| 85 | 1★ | 11 | 5 | | | | | | | | | Blissett (19), Luscombe (31) |
| 1 | | 6 | 5 | | | | | | | | | Luscombe (25, 62) |
| 12 | 1 | 6 | | | | | | | | | | Bates (13), Gayle (18), Blissett (67H) |
| 1 | | | 5 | | | | | | | | | Blissett (30H), Gayle (36) |
| 1 | | 6 | 5 | 7★ | | | | | | | | Allon (79 pen) |
| 1 | | 8 | 9★ | | | | | | | | | Allon (79) |
| 1 | | | 5 | 7 | | | | | | | | Allon (1 pen) |
| 1 | | | 5 | 7 | | | | | | | | Blissett (2), Ratcliffe (20), Manuel (78) |
| 20 | | | | 7 | | | | | | | | Allon (80) |
| 1 | | | 5 | 7 | | | | | | | | Blissett (7, 84), Bennett (47) |
| | | 6 | 9 | 15 | 16 | 20 | | | | | | Godfrey (29), Luscombe (79) |
| | | | 5 | 9 | | | | | | | | Allon (40), Gouloose (og) (42) |
| | | 6s | 5 | 7 | | | | | | | | Westley (41H) |
| | | | 5 | 7 | | | | | | | | Blissett (35) |
| | | 4 | 5 | 7 | | | | | | | | Blissett (53) |
| | | 14 | 5 | 7 | | | | | | | | |
| 4 | | 6★ | 7 | | | | | | | | | |
| 2 | | 6 | 7 | | | | | 11 | | | | |
| 85 | | 8 | 7★ | | | | | 3 | | | | Allon (38H, 45, 86H) |
| | | 5s | 5 | 7 | | | | 3 | | | | |
| 65 | | 16 | 7 | | | | | 3★ | | | | Blissett (82, 84) |
| | | | 11s | 7 | | | | 3 | | | | Allon (68 pen, 70) |
| 9 | | | 14 | 7 | | | | 3 | | | | |
| | | | 14 | 7 | | | | 3 | | | | |
| | | | 12 | 7 | | | | 3 | 11s | | | |
| | | | 7s | | | | | | 11s | | | |
| | | | 9 | 7 | | | | 3s | 11 | | | Scott (57H o.g.) |
| | | | 9s | | | | | 6 | 11 | | | |
| | | | 9s | | | | | 6 | 7 | | | |
| | | | 9 | 8 | | | | 7 | | | | |
| | | | 8 | | | | | 7★ | 6 | | | Blissett (70) |

BARCLAYS LEAGUE DIVISION ONE

Up to and including Thursday, 25th March, 1993

| | HOME | | | | | AWAY | | | | | |
|---------------------|------|----|----|----|----|------|----|---|----|----|-----|
| | P | W | D | L | F | A | W | D | L | F | Pts |
| Newcastle United | 37 | 12 | 5 | 1 | 40 | 11 | 10 | 3 | 6 | 27 | 74 |
| West Ham United | 37 | 12 | 4 | 2 | 37 | 14 | 8 | 5 | 6 | 26 | 69 |
| Portsmouth | 37 | 14 | 2 | 2 | 34 | 8 | 5 | 7 | 7 | 27 | 66 |
| Swindon Town | 36 | 12 | 4 | 2 | 35 | 18 | 5 | 6 | 7 | 25 | 61 |
| Millwall | 36 | 12 | 4 | 1 | 42 | 15 | 4 | 9 | 6 | 16 | 61 |
| Leicester City | 36 | 10 | 4 | 4 | 31 | 21 | 8 | 3 | 7 | 26 | 61 |
| Tranmere Rovers | 36 | 10 | 4 | 4 | 37 | 19 | 6 | 3 | 9 | 19 | 55 |
| Grimsby Town | 37 | 9 | 6 | 4 | 30 | 23 | 6 | 1 | 11 | 21 | 52 |
| Derby County | 35 | 7 | 1 | 10 | 30 | 29 | 8 | 5 | 4 | 25 | 51 |
| Wolves | 37 | 8 | 6 | 5 | 31 | 22 | 5 | 6 | 7 | 19 | 51 |
| Charlton Athletic | 37 | 8 | 7 | 4 | 23 | 16 | 5 | 5 | 8 | 19 | 51 |
| Barnsley | 37 | 9 | 4 | 5 | 23 | 14 | 5 | 4 | 10 | 25 | 50 |
| Peterborough United | 35 | 5 | 8 | 5 | 24 | 24 | 8 | 2 | 7 | 22 | 49 |
| Watford | 37 | 6 | 5 | 7 | 25 | 29 | 6 | 4 | 9 | 27 | 45 |
| Oxford United | 36 | 6 | 6 | 6 | 24 | 18 | 4 | 7 | 7 | 20 | 43 |
| Notts County | 37 | 8 | 5 | 5 | 27 | 18 | 2 | 7 | 10 | 19 | 42 |
| Sunderland | 35 | 7 | 5 | 6 | 24 | 19 | 4 | 4 | 9 | 12 | 42 |
| Birmingham City | 37 | 9 | 2 | 7 | 23 | 23 | 2 | 6 | 11 | 13 | 41 |
| BRENTFORD | 37 | 6 | 3 | 10 | 22 | 26 | 5 | 4 | 9 | 19 | 40 |
| Cambridge United | 37 | 6 | 5 | 8 | 22 | 27 | 3 | 8 | 7 | 18 | 40 |
| Luton Town | 36 | 4 | 11 | 4 | 21 | 25 | 4 | 5 | 8 | 18 | 40 |
| Bristol City | 35 | 6 | 5 | 6 | 21 | 23 | 4 | 4 | 10 | 18 | 39 |
| Southend United | 36 | 5 | 8 | 5 | 25 | 18 | 3 | 4 | 11 | 14 | 36 |
| Bristol Rovers | 36 | 5 | 3 | 10 | 22 | 35 | 3 | 5 | 10 | 19 | 32 |



STAR PLAYER

KEITH MILLEN

*Selected against
Birmingham.*

EMERGENCY ANNOUNCEMENT

In the unlikely event that you hear a siren sound, this would indicate an emergency. Please then listen very carefully to any announcements and carry out the instructions exactly.

This ground is equipped with CCTV installed with the help of a grant from the Football Trust.



LINE UP



BRENTFORD

Colours: Red & White

| | FIRST GOAL SCORER ODDS |
|----------------------|------------------------|
| GRAHAM BENSTEAD | 40/1 |
| BRIAN STATHAM | 10/1 |
| MICKY BENNETT | 20/1 |
| KEITH MILLEN (Capt.) | 25/1 |
| JAMIE BATES | 14/1 |
| SIMON RATCLIFFE | 12/1 |
| PAUL STEPHENSON | 14/1 |
| ALAN DICKENS | 5/1 |
| JOE ALLON | 5/1 |
| GARY BLISSETT | 25/1 |
| BILLY MANUEL | |
| | |

SWINDON TOWN

Colours: Red & Green/White Trim

| | FIRST GOAL SCORER ODDS |
|----------------------------|------------------------|
| 1 FRASER DIGBY | 20/1 |
| 2 NICKY SUMMERBEE | 12/1 |
| 3 PAUL BODIN | 16/1 |
| 4 GLENN HODDLE | 33/1 |
| 5 COLIN CALDERWOOD (Capt.) | 12/1 |
| 6 SHAUN TAYLOR | 16/1 |
| 7 BRIAN MARWOOD | 25/1 |
| 8 ROSS MACLAREN | 7/1 |
| 9 DAVE MITCHELL | 14/1 |
| 10 MARTIN LING | 7/1 |
| 11 STEVE WHITE | |
| 12 | |
| 14 | |

NEXT GAME AT GRIFFIN PARK:

SUNDERLAND
Barclays League Division One
Tuesday, April 6th, 1993



TODAY'S TEAM PAGE SPONSORED BY
GRIFFIN GOLD
1st DRAW BY
JIM BOWEN
MARCH 30th

MATCHBALL SPONSOR
BARRALET'S
AND OAK
FLORIST
BRENTFORD

THE OFFICIALS

Referee: V. G. Callow - Solihull
Linesman: M. H. Brown - Steeple Claydon
(Red & Yellow Quartered Flag)
Linesman: S. G. Clingo - Wisbech
(Yellow Flag)
4th Official: D. Phillips - Bracknell

